

MAXIMUM PRODUCT LOAD RATING: 50 kg per bar



IMPORTANT:

- **LOAD = WEIGHT OF PLATFORM or BARS + MOUNTING SYSTEM + ACCESSORIES + CARGO**
- **PLEASE REFER TO VEHICLE MANUFACTURER SPECIFICATIONS FOR MAX ROOF LOAD CAPACITY OF VEHICLE. THE LOWEST LOAD RATING APPLIES.**
- **OFFROAD RATING: SCAN QR CODE FOR LOCKNLOAD LOAD RATING GUIDE. REDUCTIONS MAY APPLY.**



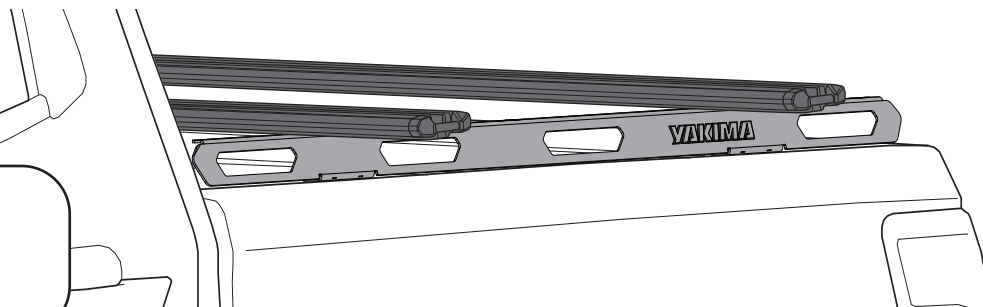
FIRST TIME INSTALLATION

- Please read instructions carefully before installation.
- Check the contents of kit. Contact your YAKIMA dealer if any parts appear missing, incorrect or damaged.
- Clean your mounting surfaces thoroughly prior to fitting the LockNLoad RuggedLine TrimHD Adapter Kit.
- Place these instructions in the vehicle's glove box after installation is complete.



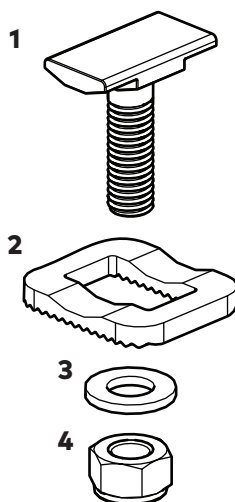
TOOLS REQUIRED:

- 13 mm Spanner
- 4 mm Allen Key



KIT CONTENTS

ITEM	COMPONENT	QTY	ITEM	COMPONENT	QTY
1.	Slot Bolt	x2	3.	M8 Washer	x2
2.	Slot Plate	x2	4.	M8 Nyloc Nut	x2



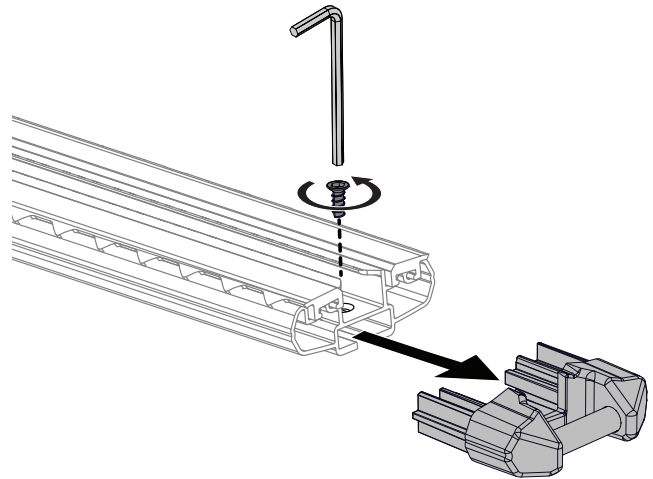
RUGGEDLINE AND TRIMHD BARS SOLD SEPARATELY

INSTALLATION

1

REMOVE END CAPS FROM BARS.

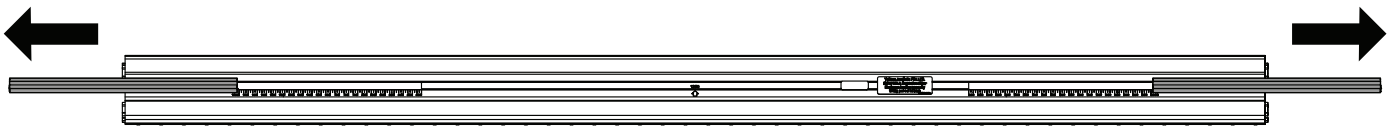
From the TrimHD bars (sold separately), remove the plastite screw from each bar end using a 4 mm allen key and pull out the end caps from bars. Keep all parts aside for later installation.



2

REMOVE INFILL.

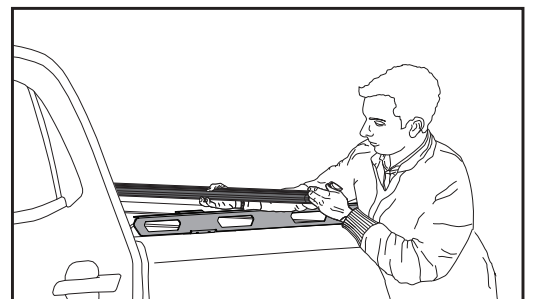
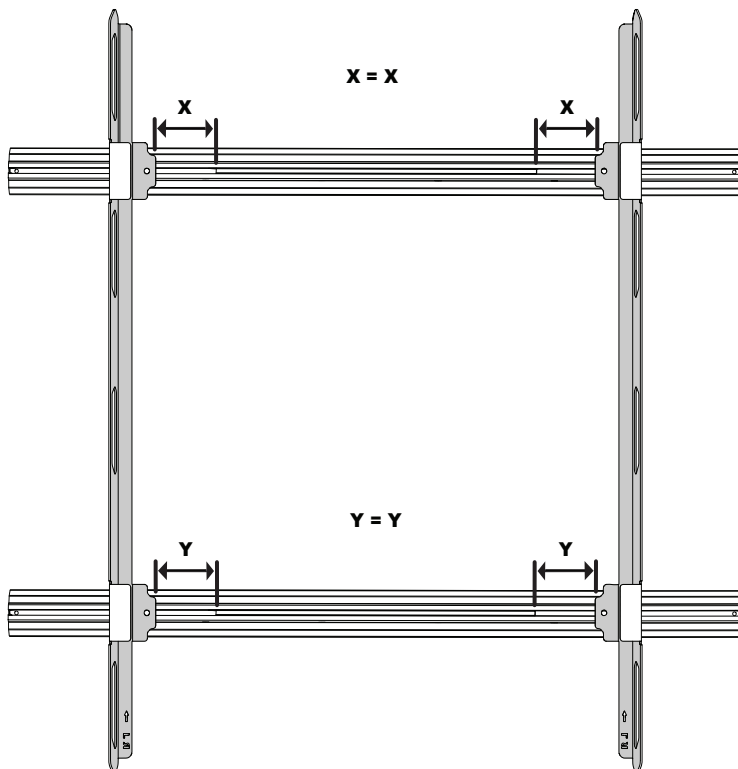
Remove the infill from underside of the TrimHD bar.



3

BAR FITMENT.

Carefully place bar assembly over RuggedLine. **Take care not to damage vehicle.** Once positioned correctly using the measurements engraved on the underside of bar, measure the underside infill channel inside edge distance to the RuggedLine.

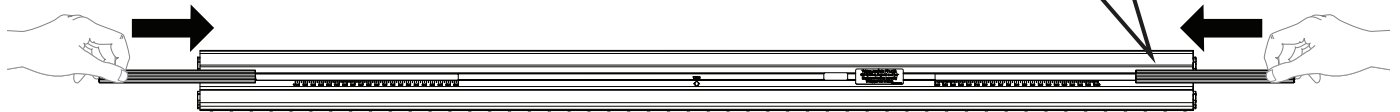
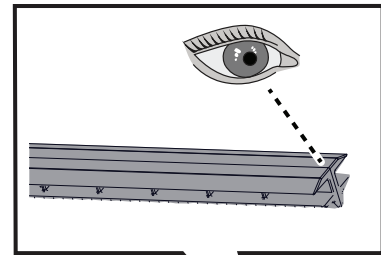
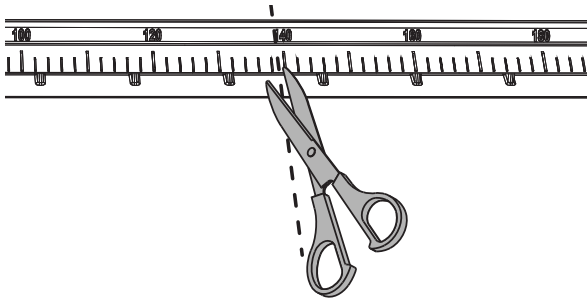


NOTE - TrimHD Bars and RuggedLine shown upside down.

4**INSERT INNER POSITION INFILL.**

Cut infill according to the measurement taken in step 3.

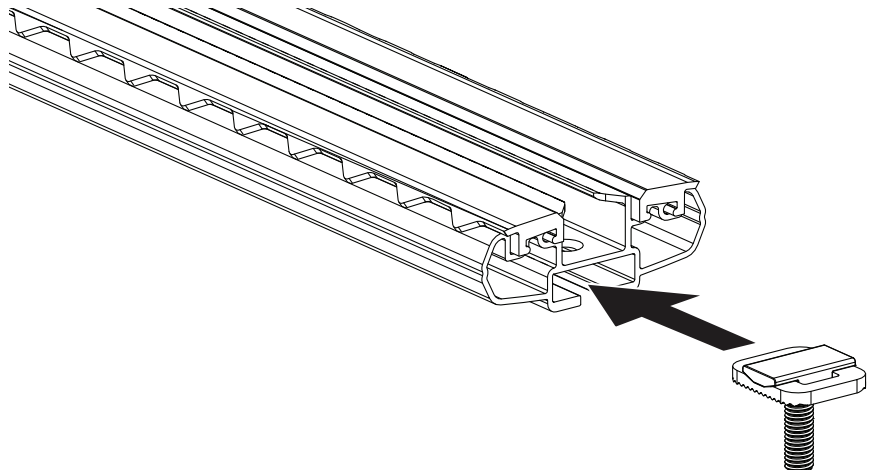
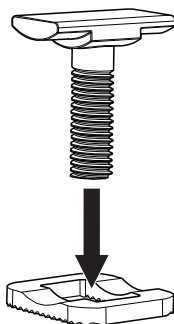
Insert the 2 inner pieces of the cut infill into the underside channel of the front and rear bar ends as shown. Retain the 2 outer pieces of the cut infill for use in step 6.



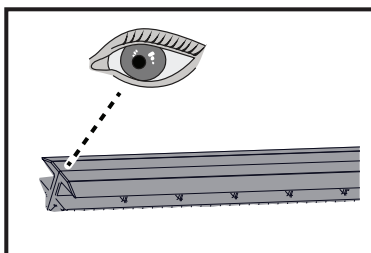
NOTE - Bar slot covers to be inserted with flat side visible

5**INSERT SLOT BOLT AND SLOT PLATE.**

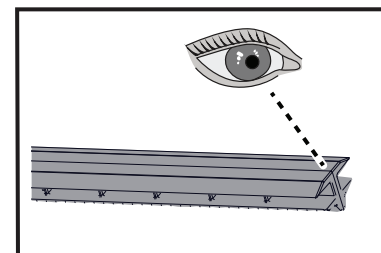
Insert the slot bolt and the slot plate into the underside bar channel.

**6****INSERT OUTER POSITION INFILL.**

Insert the 2 outer pieces of the cut infill into the underside channel of the front and rear bar ends as shown.



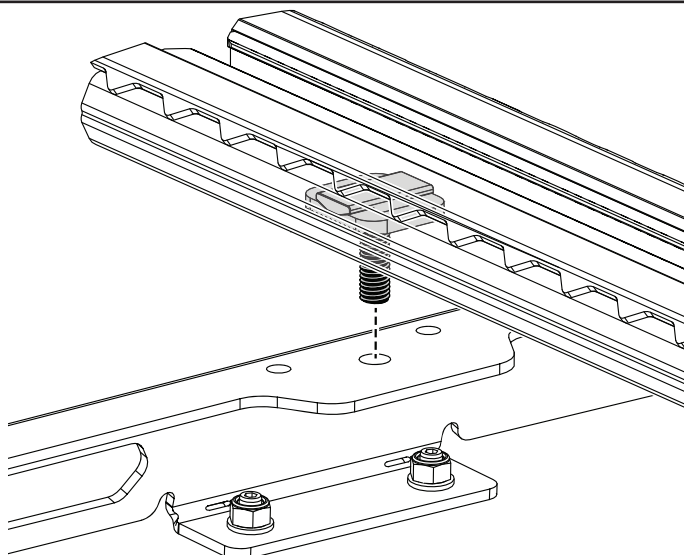
NOTE - Bar slot covers to be inserted with flat side visible



7

POSITION BARS.

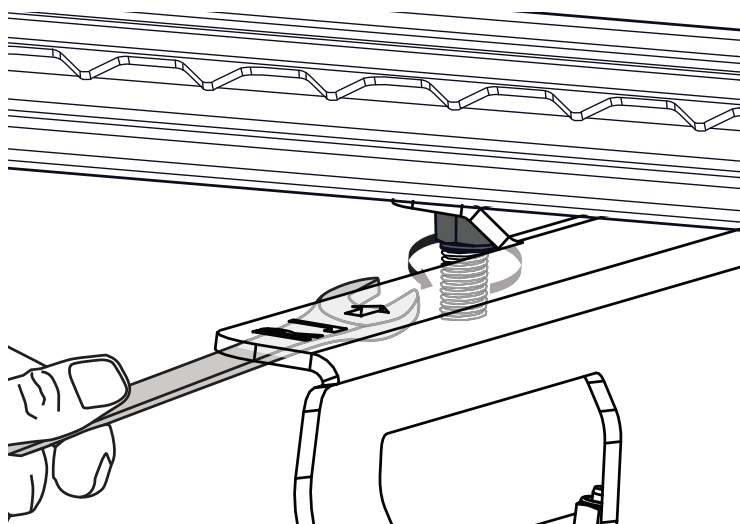
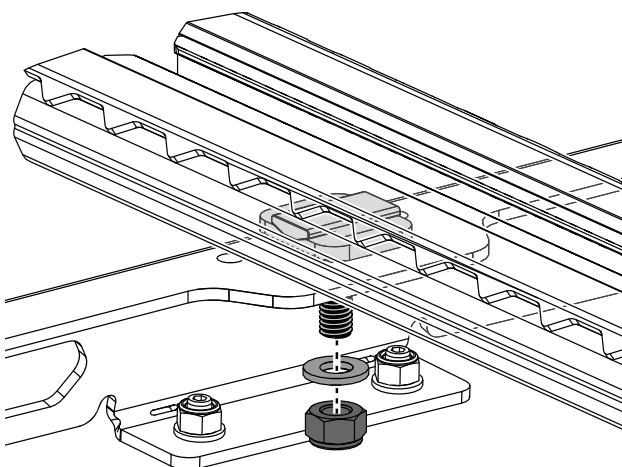
Insert the slot bolt assembly into the RuggedLine.



8

SECURE SLOT BOLT ASSEMBLY.

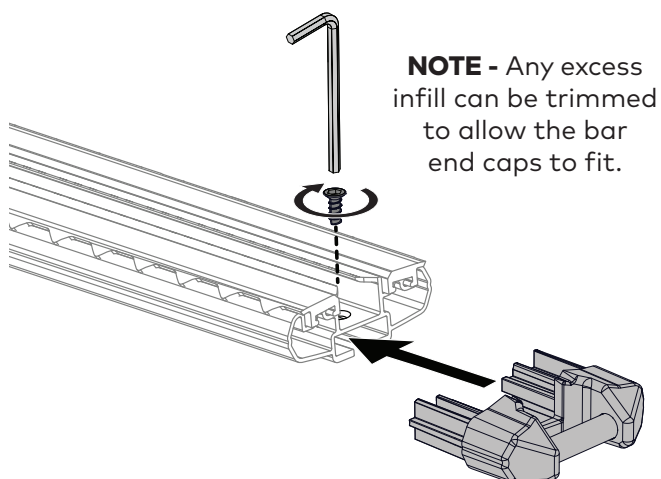
Using the 13 mm spanner for the M8 nyloc nut, secure the slot bolt assembly to the RuggedLine. Tighten to 7 Nm.



9

REINSTALL END CAPS TO BARS.

Insert the end caps into bar ends. Install and tighten the plastite screws using a 4 mm allen key.



10

CHECK BARS ARE SECURE.

Check all bars are secure.



This page intentionally left blank



www.yakima.com.au
www.yakima.co.nz
www.yakima.com
www.yakima.eu

YAKIMA AUSTRALIA PTY LTD

17 Hinkler Court
Brendale, QLD 4500
Australia
1800 143 548

YAKIMA PRODUCTS, INC.

4101 Kruse Way
Lake Oswego, OR
97035-2541
USA
888 925 4621
yakima.com/support

ALL CONTENT SUBJECT TO YAKIMA AUSTRALIA PTY LTD COPYRIGHT © 2024