

21MM SLOT ADAPTER KIT

FIRST TIME INSTALLATION

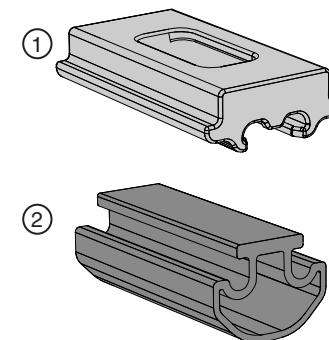
- Please read instructions carefully before installation.
- Check the contents of kit. Contact your dealer if any parts appear missing or damaged.

IMPORTANT WARNING!

IT IS CRITICAL THAT ALL RACKS AND ACCESSORIES BE PROPERLY AND SECURELY ATTACHED TO YOUR VEHICLE. IMPROPER ATTACHMENT COULD RESULT IN AN AUTOMOBILE ACCIDENT, AND COULD CAUSE SERIOUS BODILY INJURY OR DEATH TO YOU OR TO OTHERS. YOU ARE RESPONSIBLE FOR SECURING THE RACKS AND ACCESSORIES TO YOUR CAR, CHECKING THE ATTACHMENTS PRIOR TO USE, AND PERIODICALLY INSPECTING THE PRODUCTS FOR ADJUSTMENT, WEAR, AND DAMAGE. THEREFORE, YOU MUST READ AND UNDERSTAND ALL OF THE INSTRUCTIONS AND CAUTIONS SUPPLIED WITH YOUR PRODUCT PRIOR TO INSTALLATION OR USE. IF YOU DO NOT UNDERSTAND ALL OF THE INSTRUCTIONS AND CAUTIONS, OR IF YOU HAVE NO MECHANICAL EXPERIENCE AND ARE NOT THOROUGHLY FAMILIAR WITH THE INSTALLATION PROCEDURES, YOU SHOULD HAVE THE PRODUCT INSTALLED BY A PROFESSIONAL INSTALLER SUCH AS A ROOF RACK SPECIALIST.

KIT CONTENTS

Item	Component	QTY
1	Adapter Base	4
2	Rubber Spring	4

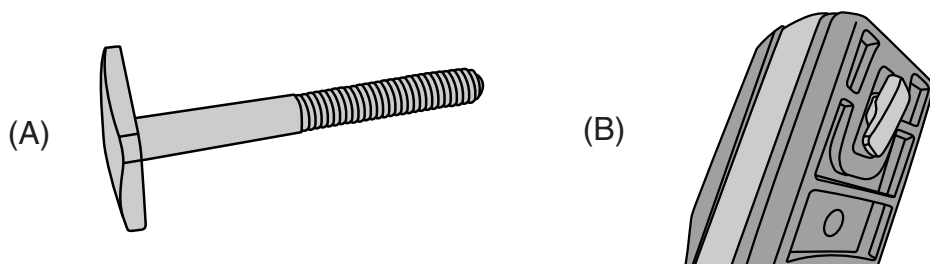


TOOLS REQUIRED

- Nil

CHECK CARRIER MOUNTING INSTRUCTIONS

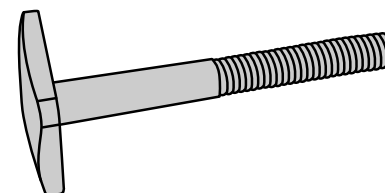
- 1 Check your mounting instructions for your carrier. Does it have (A) a removable T-Bolt or (B) a fixed/drop-and-turn?



Please follow steps specific for (A) or (B).

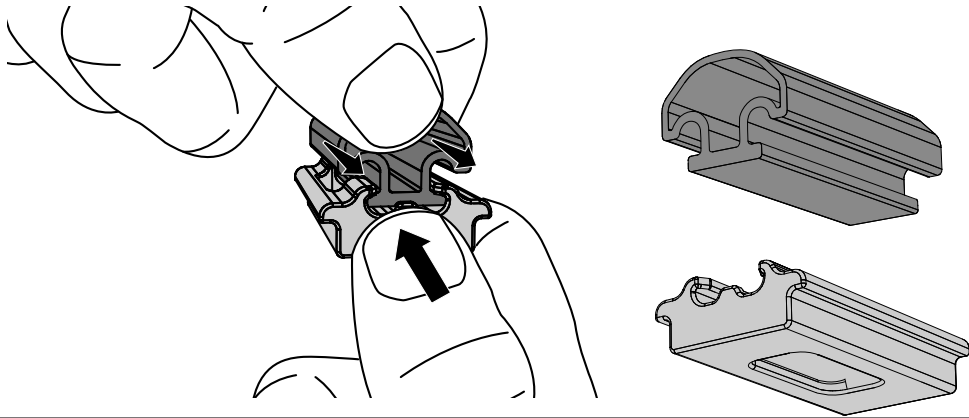
REMOVABLE T-BOLT SPECIFIC STEPS

- A1 Remove T-Bolt from your carrier as per your carrier's instructions.



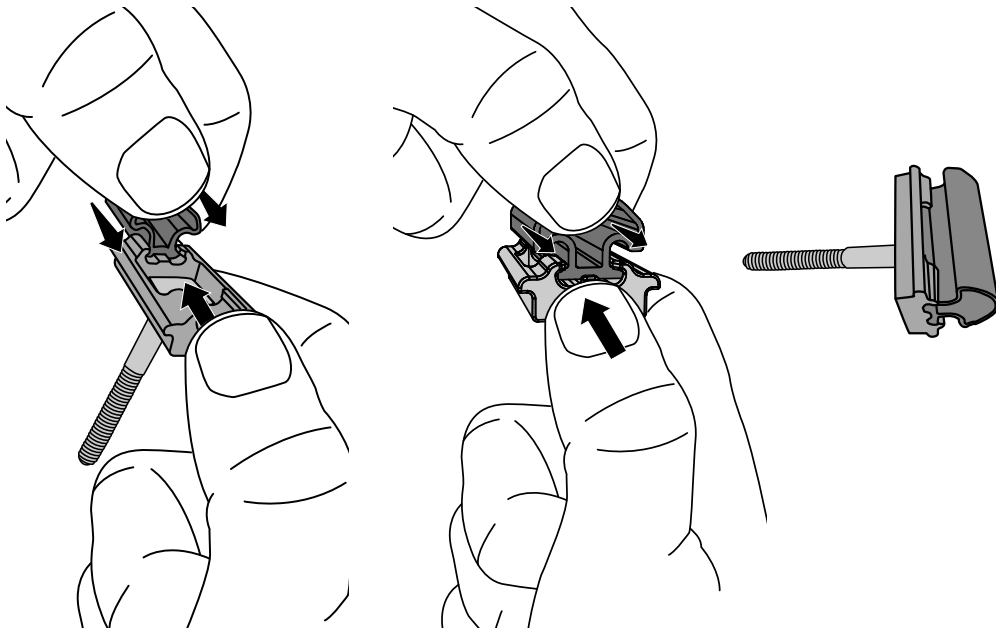
DISASSEMBLE SLOT ADAPTER

A2 Remove rubber spring from adapter base, if not already disassembled,



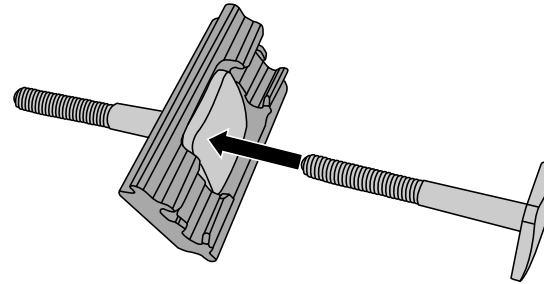
INSERT T-BOLT

A4 After inserting T-Bolt, re-insert rubber spring as shown.



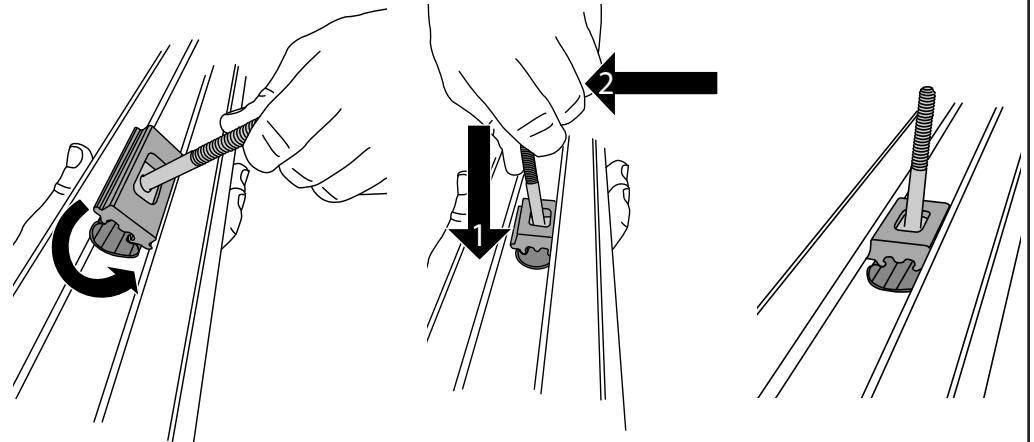
INSERT T-BOLT

A3 Insert T-Bolt into each adapter base as shown.



INSERT SLOT ADAPTER INTO CROSSBAR

A5 Insert slot adapter into bar by angling in and pushing down as shown. Ensure T-Bolt is upright. Repeat for as many T-Bolts as your carrier has.

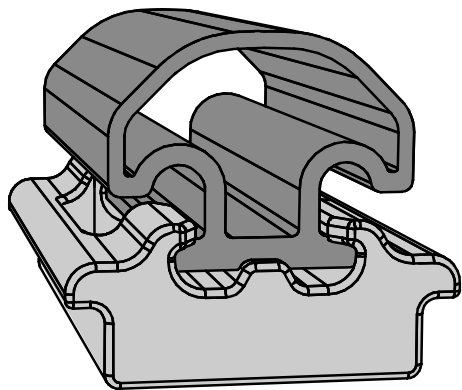


REFER TO CARRIER'S INSTRUCTIONS

A6 Follow the process in your carrier's instructions for securing to T-bolts.

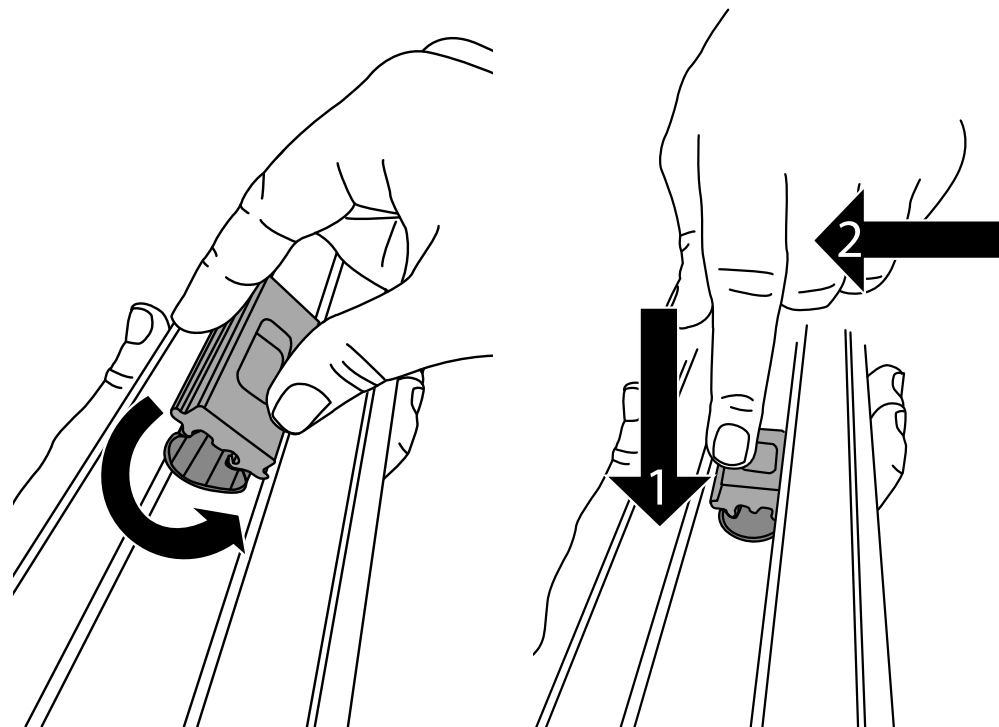
FIXED/DROP-AND-TURN SPECIFIC STEPS

- B1** Ensure rubber spring is attached to the adapter base



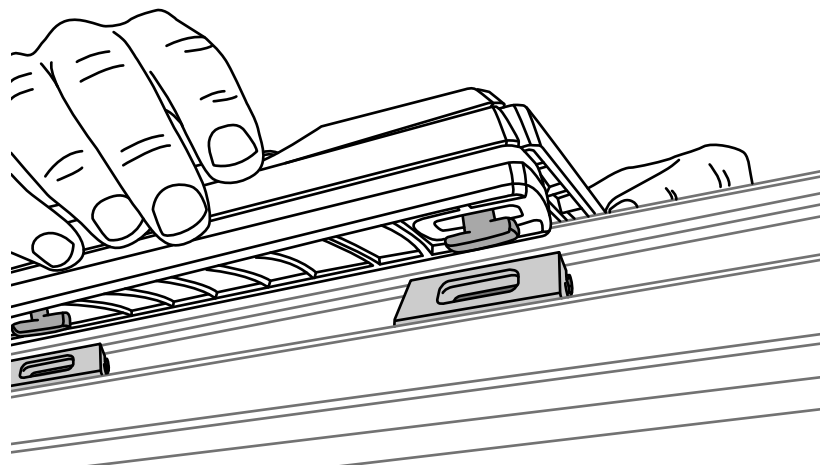
INSERT SLOT ADAPTER INTO CROSSBAR

- B2** Insert slot adapter into bar by angling in and pushing down with your finger as shown. Repeat for as many T-Bolts as your carrier has.



POSITION ADAPTERS APPROPRIATELY

- B3** Position adapters so they can engage with the carrier's T-bolts.

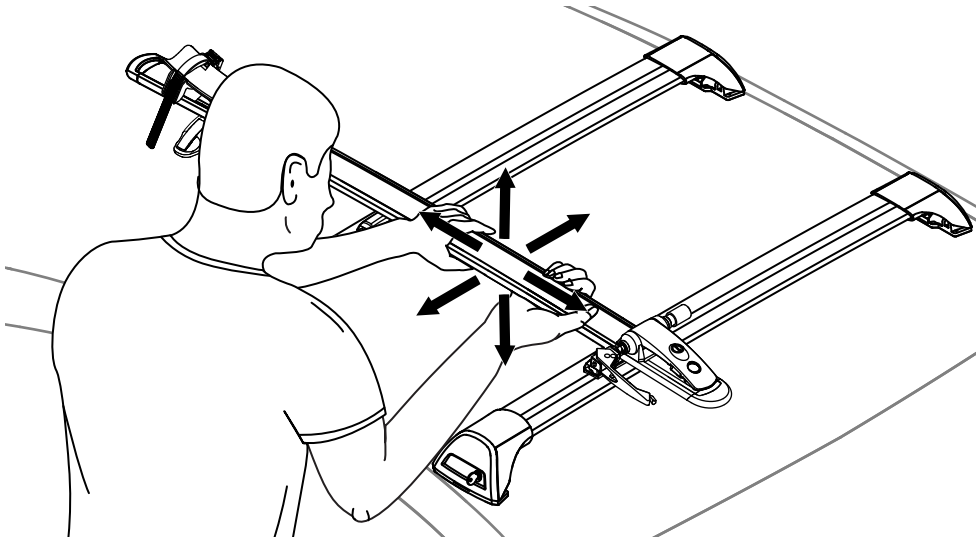


REFER TO CARRIER'S INSTRUCTIONS

- B4** Follow the process in your carrier's instructions for securing to T-bolts.

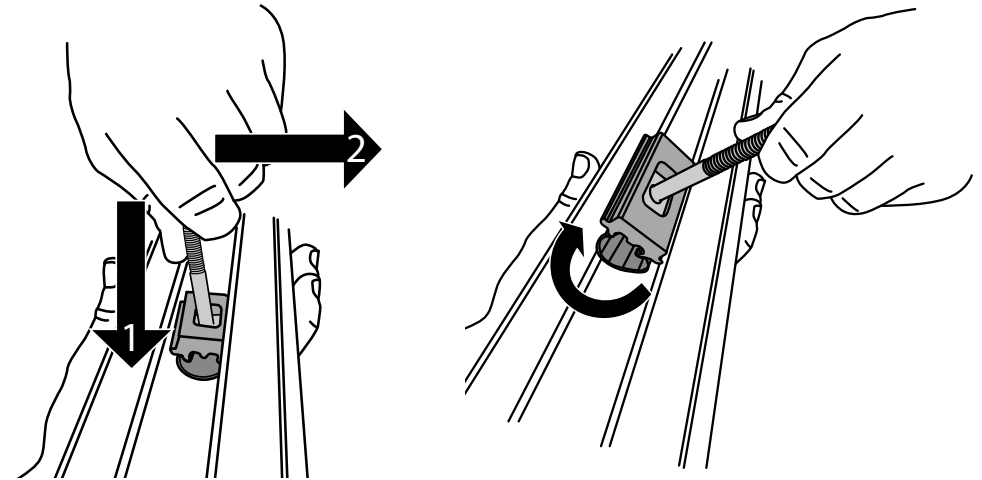
ENSURE CARRIER IS SECURE

A7 B5 After installation, ensure your carrier is secure.



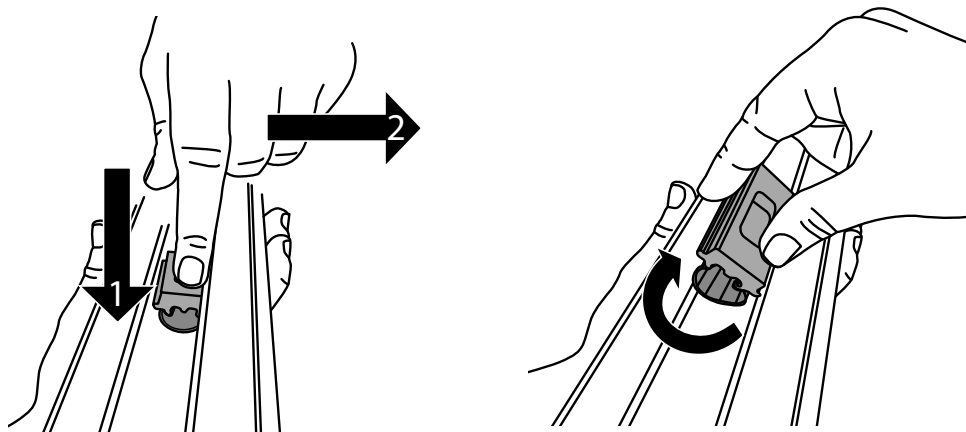
FOR REMOVAL - REMOVABLE T-BOLT SPECIFIC STEP

A8 For removal, push the slot adapter down, tilt and remove.



FOR REMOVAL - FIXED/DROP-AND-TURN SPECIFIC STEP

B6 For removal, push the slot adapter down, tilt and remove.



MAINTENANCE

- Check roof rack is securely attached whenever you refit it to the vehicle. If the unit feels loose, refer to the fitting instructions and readjust.
- Regularly check all fasteners. This includes all attached accessories and roof racks.
- If contaminated with oil, fuel or acid remove with hot soapy water.

CAUTION

- Do not exceed the vehicle manufacturer's roof load rating. Total load equals weight of roof racks + accessories + cargo/equipment.
- Ensure that all loads are distributed evenly across the roof racks and are secured.
- A loaded roof rack system can alter the performance of your vehicle. Be especially aware of the effects of side winds, changing of direction, and braking performance. Avoid rapid acceleration and deceleration. Drive Carefully.
- Make sure all loads are securely fastened with non-elastic straps. Check regularly during longer journeys.
- Never drive into a car wash with the roof rack system fitted.