

## TLC SADDLE STRAP

These TLC straps are designed to be used in conjunction with the Yakima TLC Saddles, although they can also be used separately to hold down other loads on a car-top carrier.

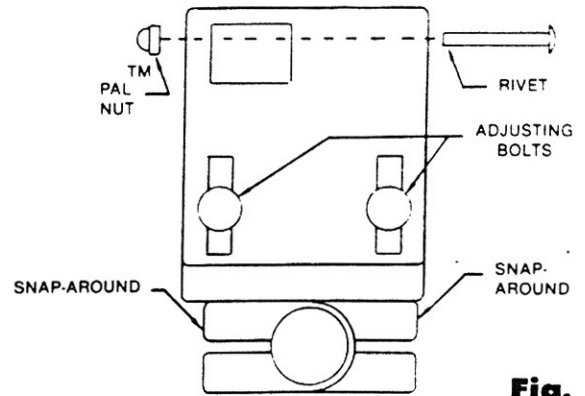
### CONTENTS:

4 Rivets, 4 Pal Nuts<sup>®</sup>, 2 pair TLC straps

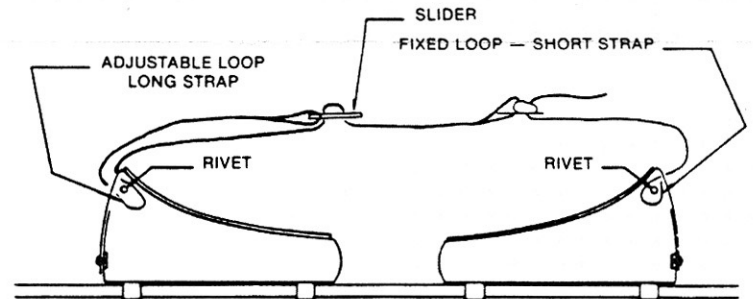
### INSTALLATION INSTRUCTIONS

- Using the rivets and Pal Nuts<sup>®</sup> in this package, secure both the fixed loop in the short straps and the adjustable loop in the long straps in the saddles. (See **Fig. 1 & 2**) The Pal Nut<sup>®</sup> must be pushed firmly over the end of the rivet.
- The TLC strap may be adjusted by moving the slider. To lengthen the strap, move the slider away from the buckle, to tighten the strap, move the slider closer to the buckle.
- Sailboard masts, with or without the sail wrapped around them, may be carried "inside" thereby creating a loop in the straps as illustrated in **Fig. 3**. As the strap is pulled tight around the sailboard, the mast is secured "within" the saddle.
- When carrying two sailboards in the Yakima TLC Saddles with TLC Straps, we recommend the use of Yakima Clones to further stabilize the load and prevent flattening of foot straps. (See **Fig. 4**)
- Remember to secure the front of a load, sailboard(s) or kayaks, to the front bumper or tow loops of your vehicle with a sturdy line or strap. Failure to do so may result in the loss of the load if any component of the tie-down system fails, and will void the warranty of this product.

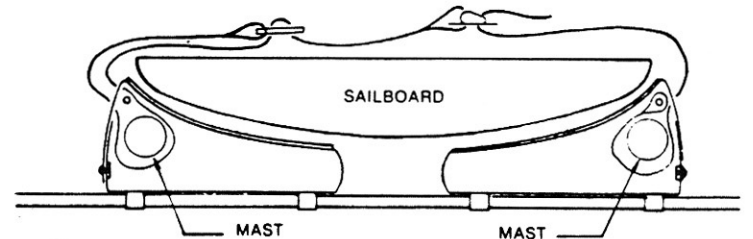
**NOTE:** If you experience any strap vibration or "hum", give the straps a half twist to eliminate the harmonics in the wind at speed.



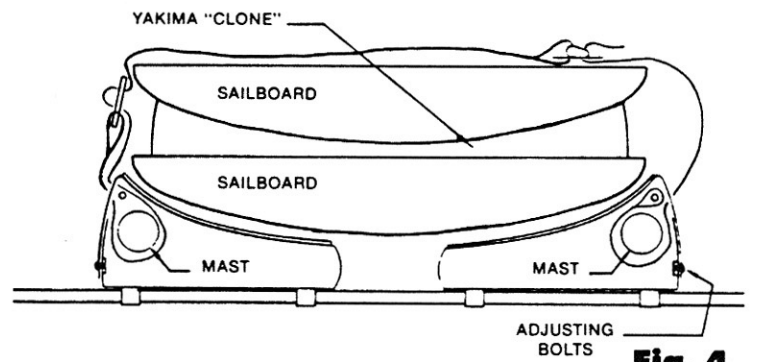
**Fig. 1**



**Fig. 2**



**Fig. 3**



**Fig. 4**

**WARRANTY** Since Yakima Products has no control over the attachment of its products to any vehicle, Yakima Products cannot assume responsibility for the attachment or use of its products to any vehicle. nor can Yakima Products assume responsibility for any damages resulting from the attachment or use of its products to any vehicle. Yakima Products assumes responsibility only for products produced by or for Yakima Products. The liability of Yakima Products is limited to the replacement or repair of merchandise which proves defective in materials and/or workmanship. This liability is further limited to one year from date of purchase. Additionally, any warranty from Yakima Products is applicable only if instructions are followed and the product is properly used. Normal wear and tear of merchandise or damage resulting from misuse, accidents, or alterations are not covered by this warranty. If an article is thought to be defective, the customer shall return it to an authorized Yakima dealer with proof of purchase. Yakima Products will then issue authorization to the dealer for the return of these articles. If an article is found to be defective upon inspection by Yakima Products, Yakima Products will repair or replace the article at its discretion without charge. Freight is not included. Unauthorized returns will not be accepted.