

YAKIMA

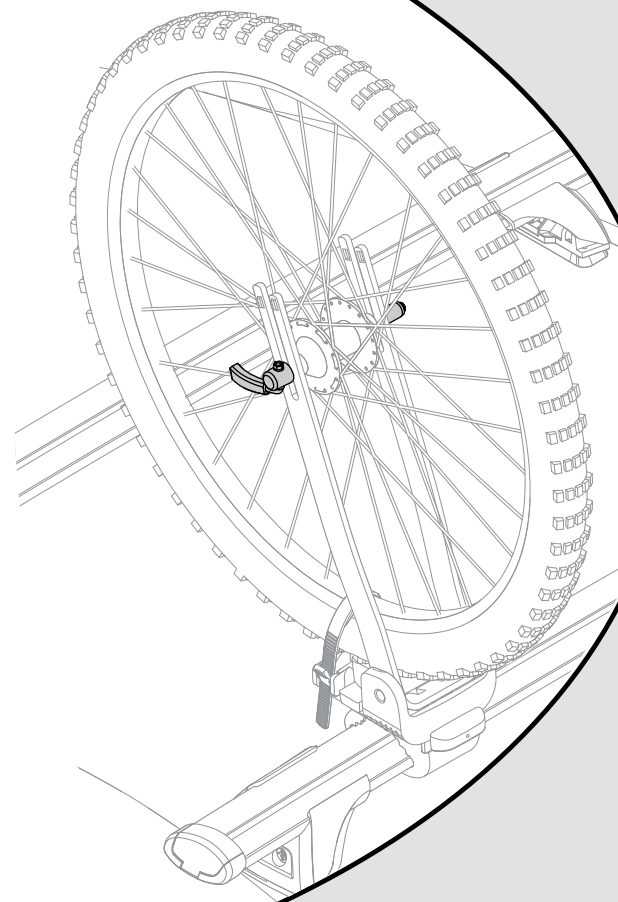
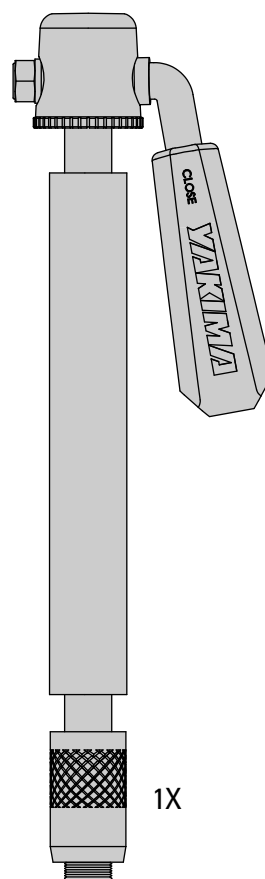
THRU-AXLE SKEWER



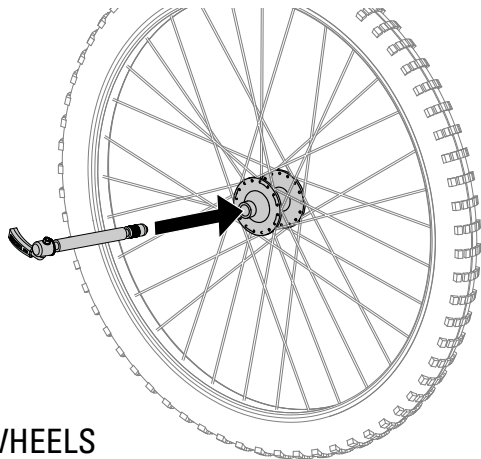
Max Hub Width: 110 mm
Largeur maxi du moyeu : 110 mm
Ancho máximo del cubo: 110 mm



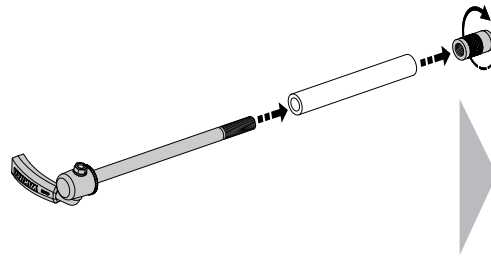
USE ONLY WITH YAKIMA
WHEEL CARRIERS
N'EMPLOYER QU'AVEC LES
PORTE-ROUES YAKIMA
UTILIZAR SOLAMENTE CON
PORTARUEDAS DE YAKIMA



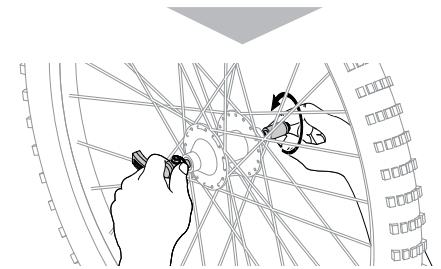
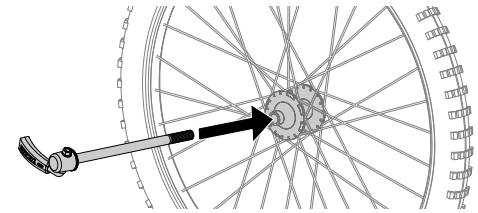
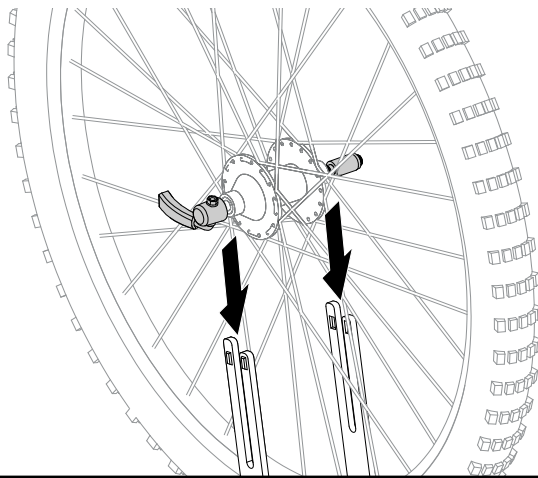
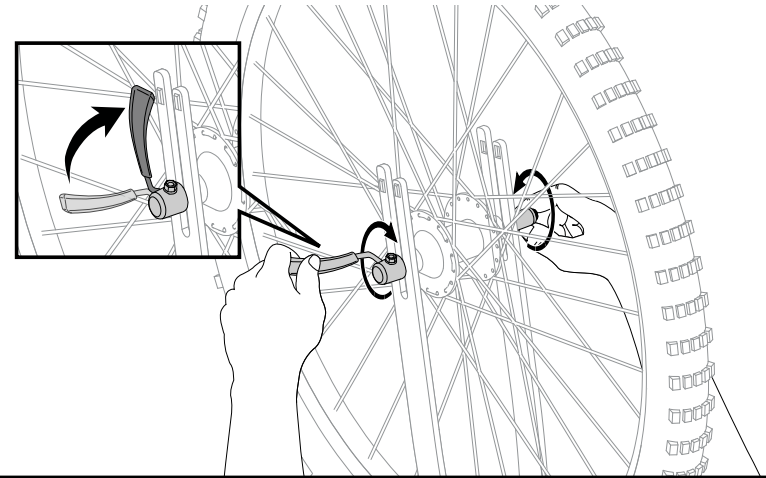
Part #1035592 Rev.B

1

15 MM THRU-AXLE WHEELS
ROUES À AXE TRAVERSANT DE 15 MM
RUEDAS CON EJE PASANTE DE 15 MM



12 MM THRU-AXLE WHEELS
ROUES À AXE TRAVERSANT DE 12 MM
RUEDAS CON EJE PASANTE DE 12 MM

**2****3**

Test security by tugging at wheel. If wheel can move out of the fork, open lever and tighten the nut slightly. Close lever again with firm pressure. Repeat if necessary.

Vérifier la solidité du montage en tirant sur la roue. Si la roue peut sortir de la fourche, relever le levier et serrer l'écrou légèrement. Rabattre le levier avec une bonne pression. Recommencer au besoin.

Tire de la rueda para verificar que esté bien fijada. Si la rueda aún se mueve con respecto a la horquilla, abra la palanca y apriete un poco la tuerca. Cierre la palanca nuevamente con una presión firme. Si es necesario, repita la operación.