

FIRST TIME INSTALLATION

- Please refer to our website for the latest version of the fit listing & for the latest version of the instructions.
- Please read instructions carefully before installation.
- Check the contents of kit. Contact your YAKIMA dealer if any parts appear missing, incorrect or damaged.
- Clean your roof thoroughly prior to fitting the Track Mount Roof Rack System.
- Place these instructions in the vehicle's glove box after installation is complete.

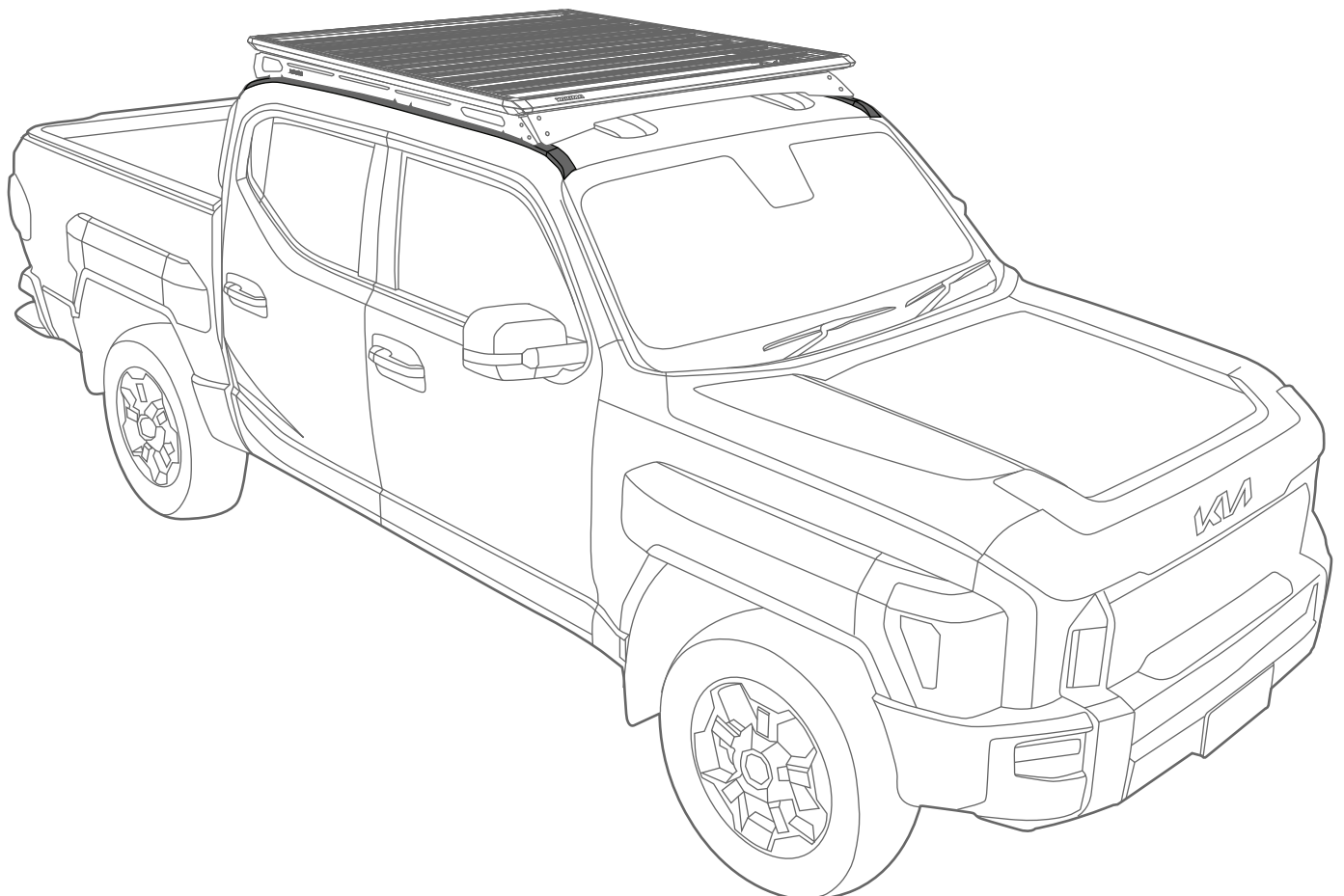
PRODUCT COMPATIBILITY

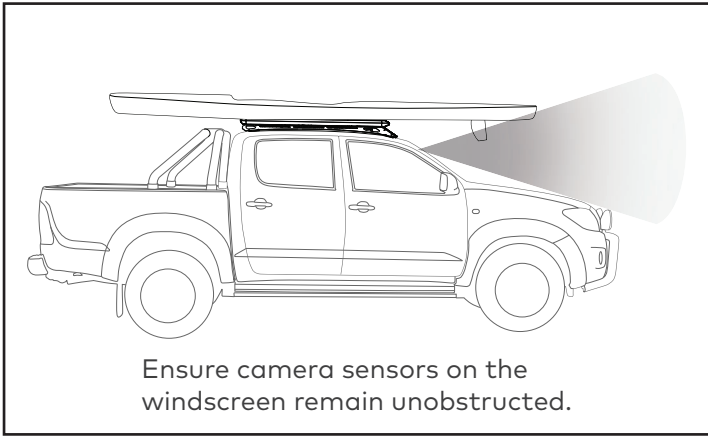
This track is compatible with the following Leg/Tower systems:

- RuggedLine HD 8005204
- SkyLine Leg 9813022 & 9813024 using Landing Pad 1 (9813801) or Landing Pad 26 (9813826)
- Also compatible with TrackTowers 8000198 & 8000199
- NOT compatible with LockNLoad MK1 & MK2 Legs.

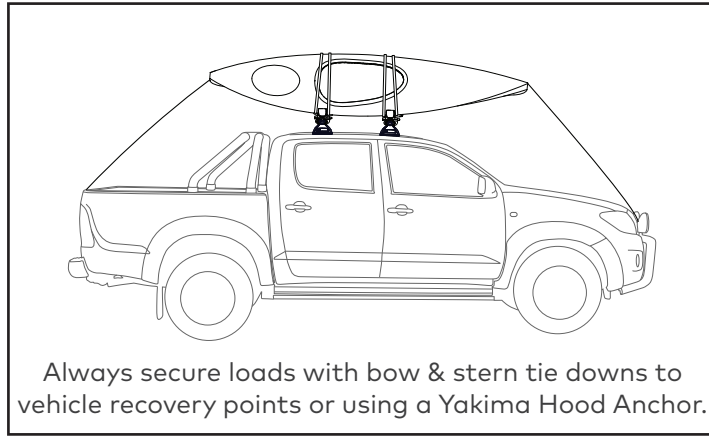


PLATFORM & RUGGEDLINE HD SOLD SEPARATELY.

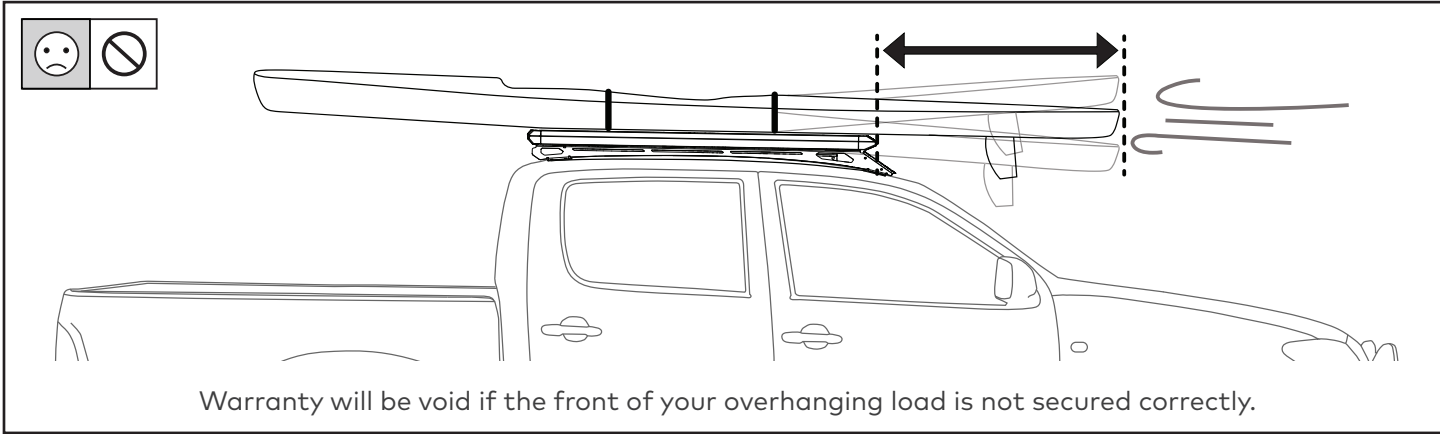




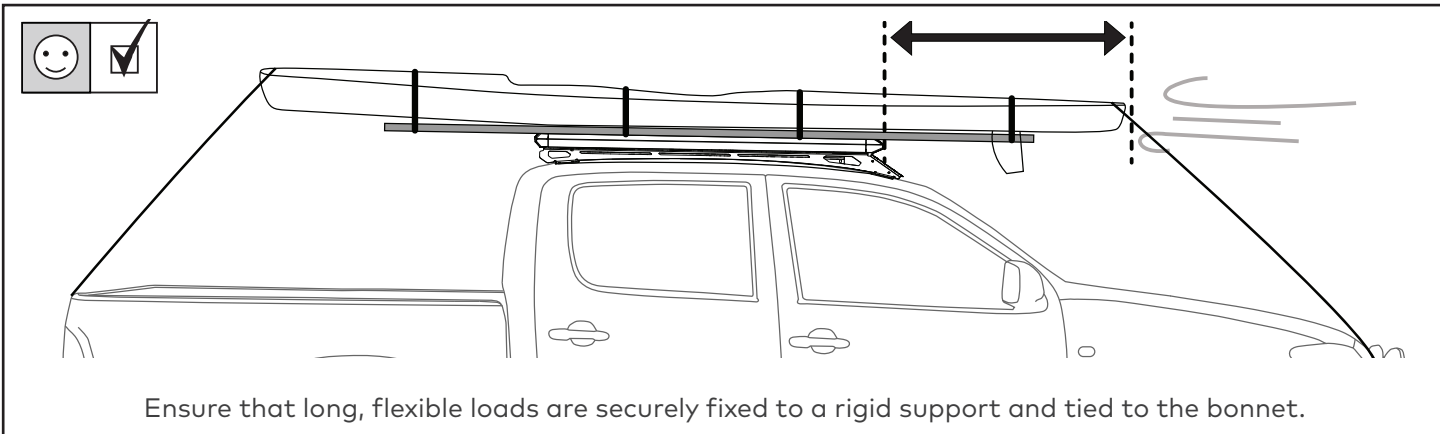
Ensure camera sensors on the windscreen remain unobstructed.



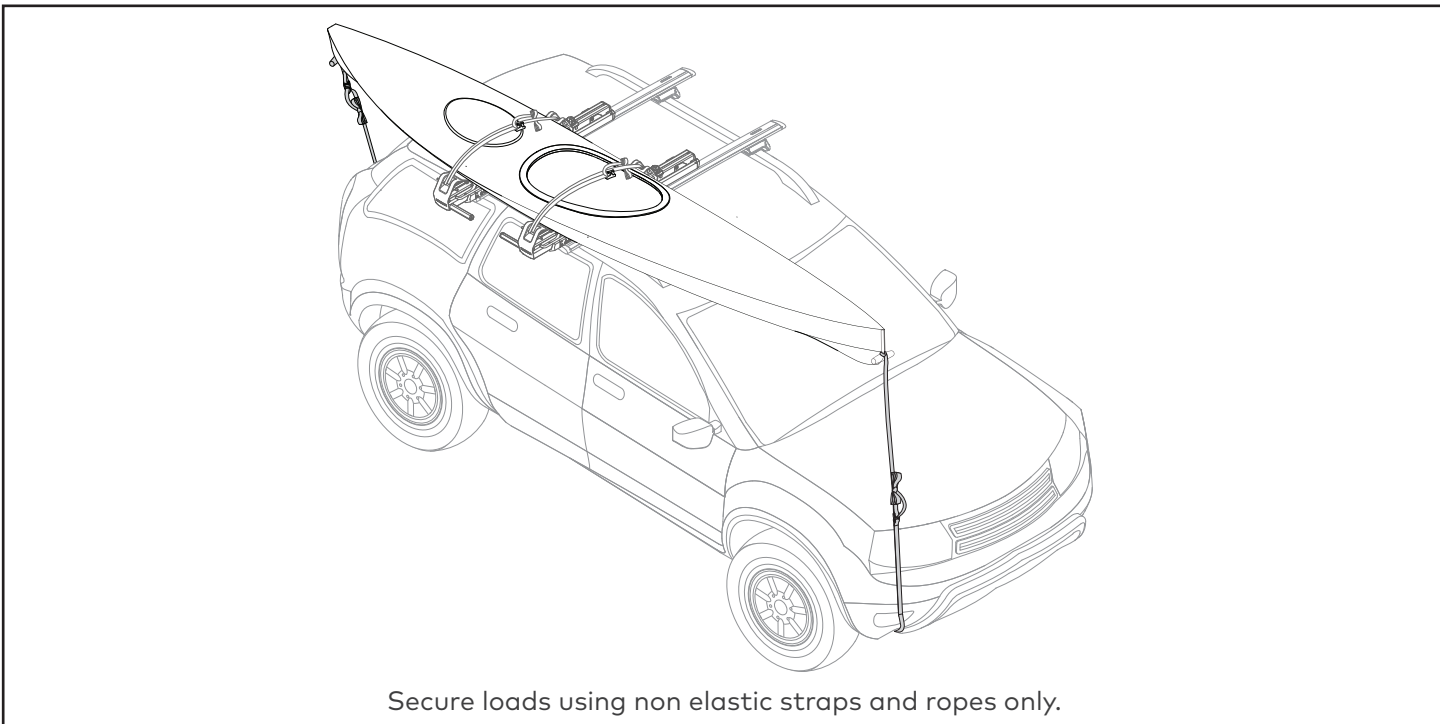
Always secure loads with bow & stern tie downs to vehicle recovery points or using a Yakima Hood Anchor.



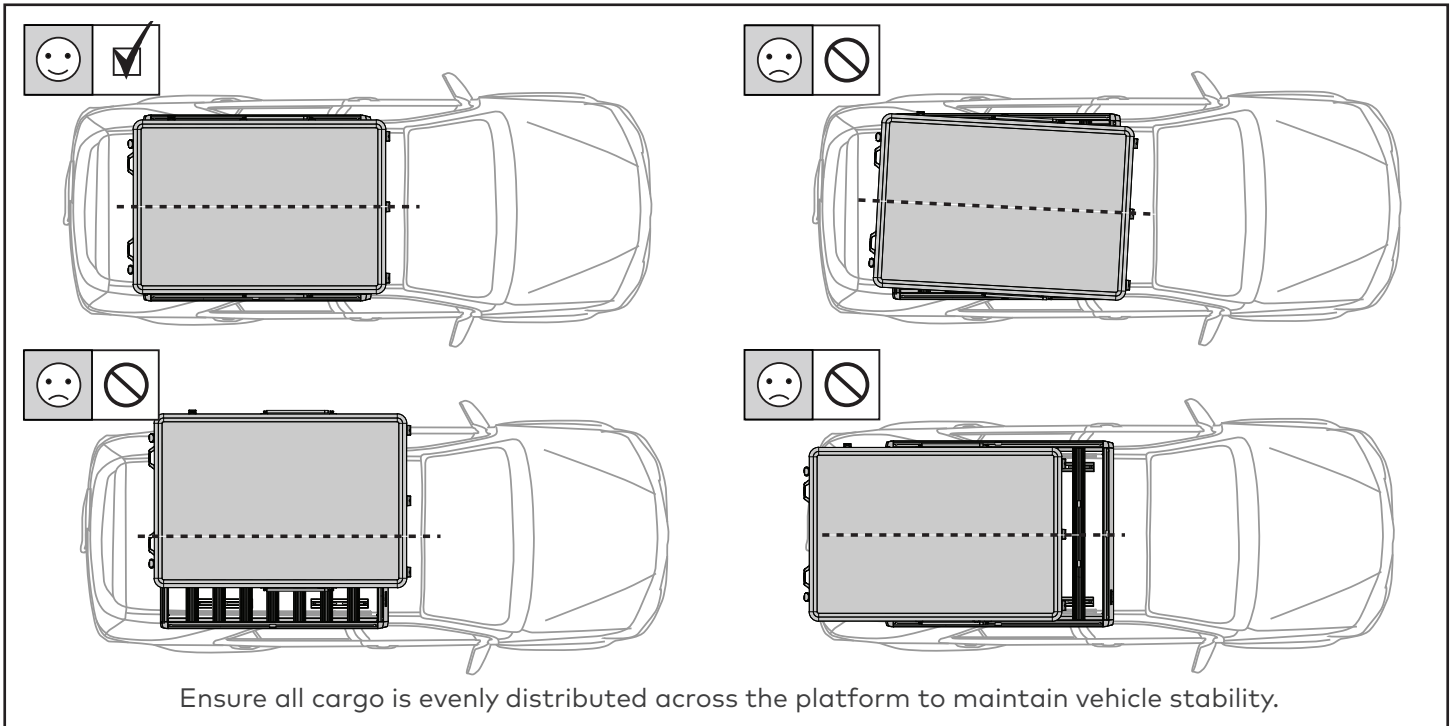
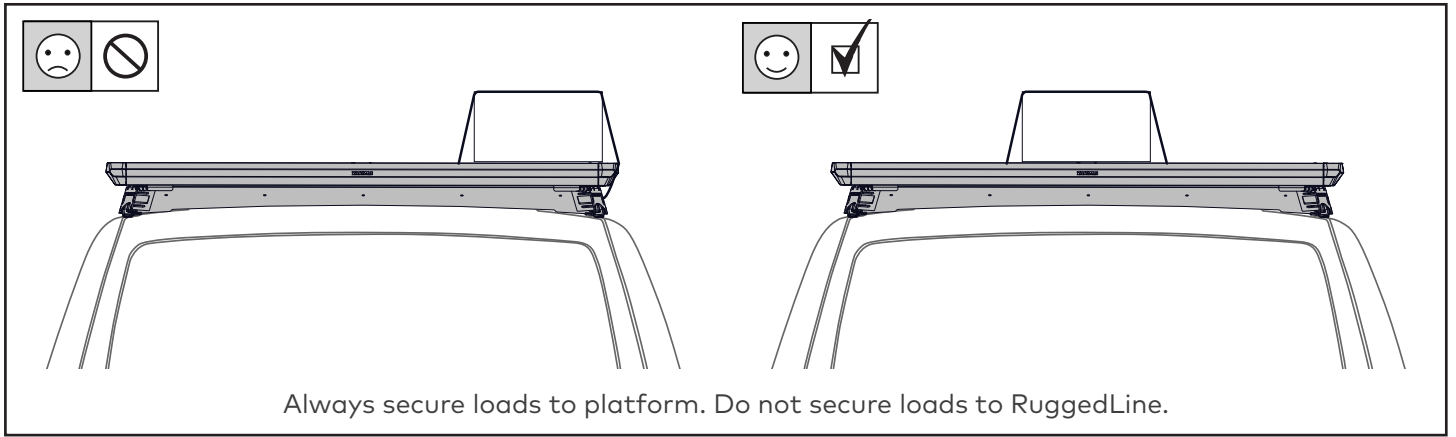
Warranty will be void if the front of your overhanging load is not secured correctly.



Ensure that long, flexible loads are securely fixed to a rigid support and tied to the bonnet.



Secure loads using non elastic straps and ropes only.



MAINTENANCE AND SAFETY CHECKS

Check attachment hardware and load for tight fit and function:



- Before the start of any journey.
- After driving a short distance (50 km or 30 min) following rack or load install.
- At regular intervals on longer journeys.
- After re-fitment.
- Every two hours on bad terrain.
- After interruption of a journey during which the vehicle was left unsupervised (check for damage due to outside intervention).

Always ensure your vehicle's total GVM (Gross Vehicle Mass) and axle load limits stay within the manufacturer's specifications (refer to your owner's manual).

LOAD RATING



PRODUCT LOAD RATING WITH PLATFORM & TRIMHD BARS

	DYNAMIC	LOAD RATING UP TO:	100 kg 220 lbs
	STATIC	LOAD RATING UP TO:	272 kg 600 lbs

- **LOAD = WEIGHT OF PLATFORM or BARS + MOUNTING SYSTEM + ACCESSORIES + CARGO**
- **PLEASE REFER TO VEHICLE MANUFACTURER SPECIFICATIONS FOR MAX ROOF LOAD CAPACITY OF VEHICLE. THE LOWEST LOAD RATING APPLIES.**
- **SCAN QR CODE FOR MORE INFORMATION ON LOAD RATINGS AND OFFROAD REDUCTIONS.**

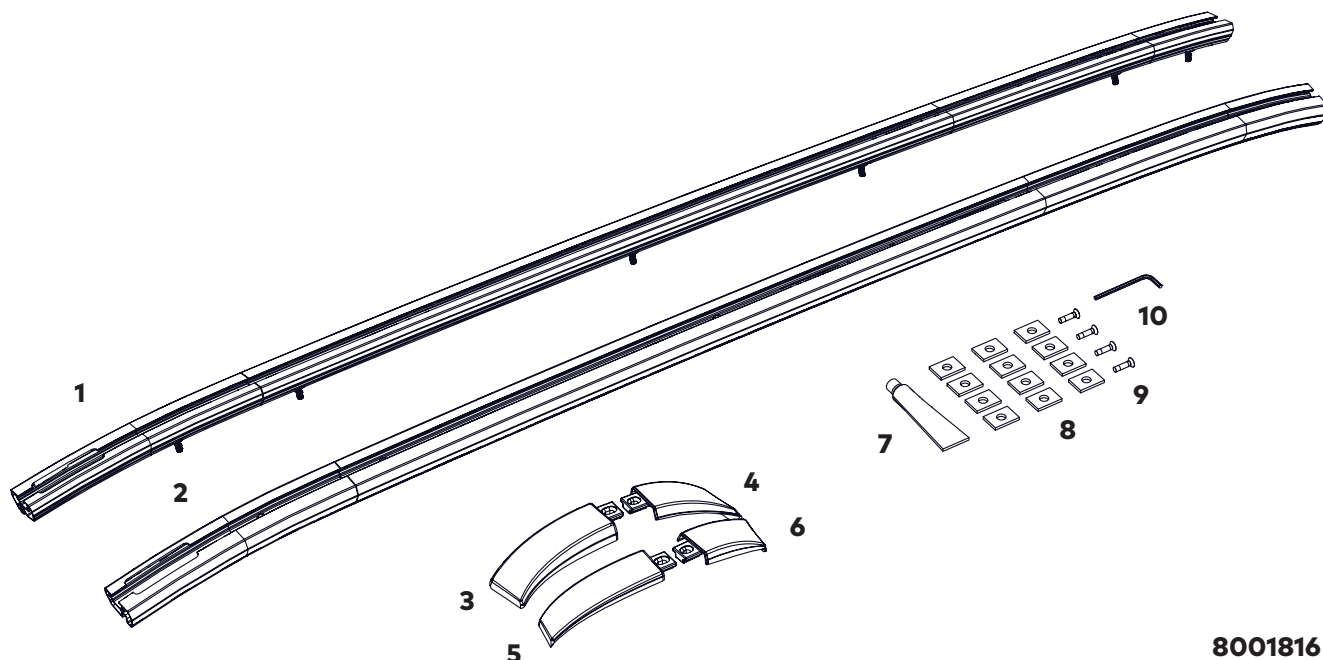


TOOLS REQUIRED:

- Ratchet
- Trim Remover Tool
- Socket Wrench
- Phillips Head screwdriver
- 10 mm socket

KIT CONTENTS

ITEM	COMPONENT	QTY	ITEM	COMPONENT	QTY
1.	Track Assembly Tasman 25+ LH	x1	6.	Track End Cap Front Right	x1
2.	Track Assembly Tasman 25+ RH	x1	7.	Silicone Sealant	x1
3.	Track End Cap Rear Left	x1	8.	Foam Adhesive	x12
4.	Track End Cap Front Left	x1	9.	Countersunk Hex Screw M5 X 20	x4
5.	Track End Cap Rear Right	x1	10.	3 mm Allen Key	x1



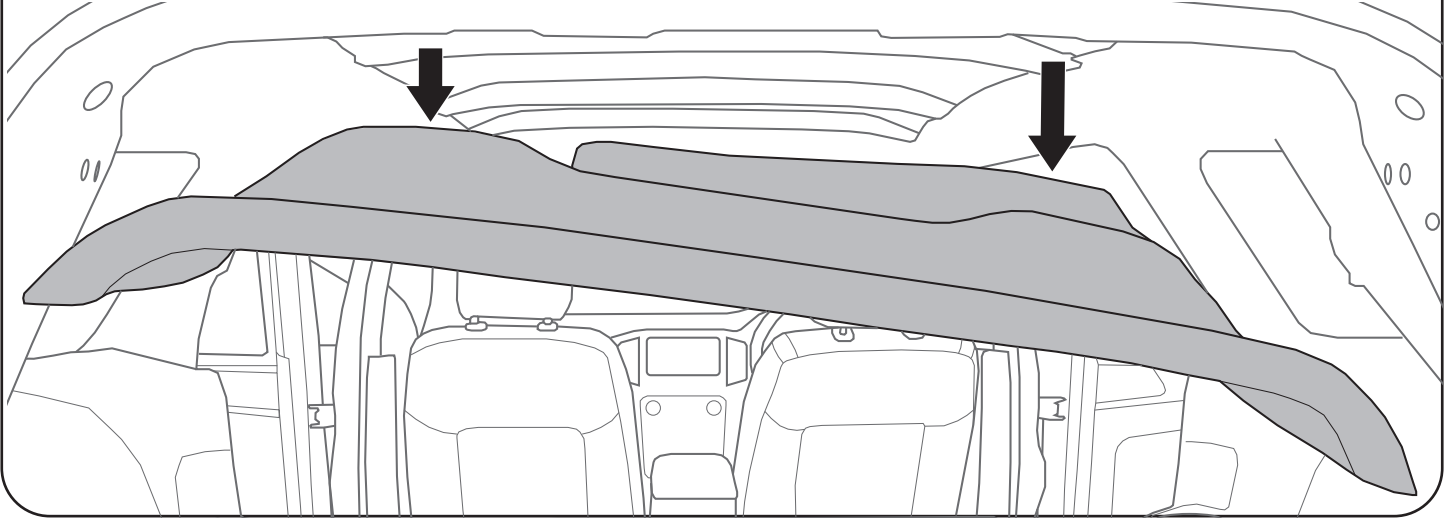
8001816

REMOVE FACTORY RAILS



REMOVE ROOF LINING (RECOMMENDED PROFESSIONALS ONLY).

Before the factory roof rails can be removed, you will need to arrange for the roof lining to be carefully removed to provide access to the rail nuts. These are only accessible from the underside of the roof.

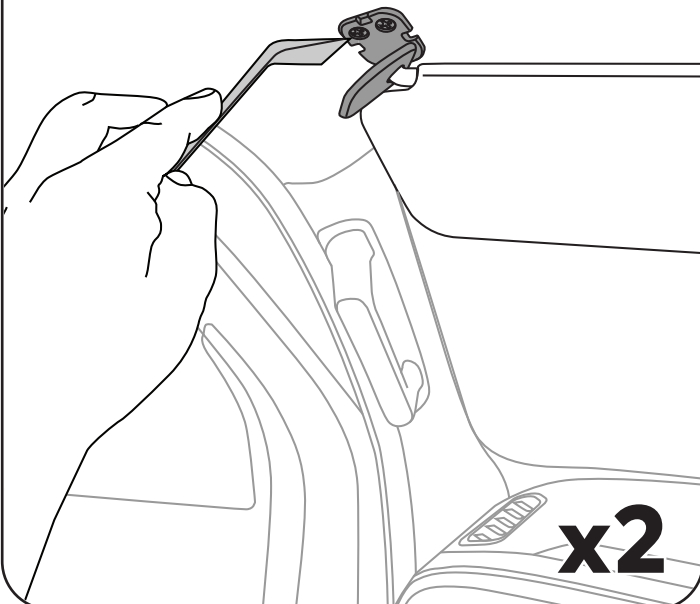


1 REMOVE SUN VISORS.

Remove both sun visor screw covers using a trim remover tool or tape wrapped screwdriver.

Remove both visor screws using a Phillips Head screwdriver.

Remove and safely store the sun visors.

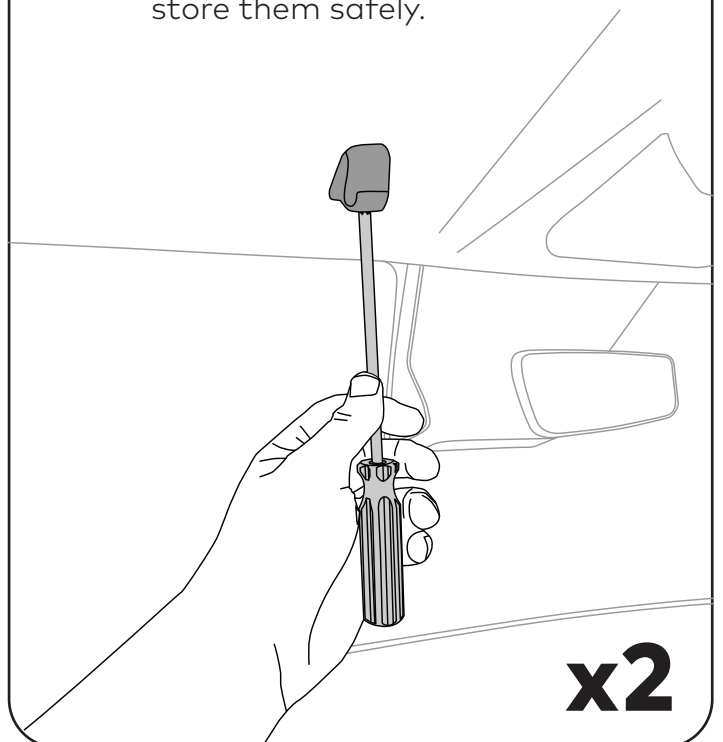


2 REMOVE VISOR CLIPS.

Remove both visor clips using a Phillips Head screwdriver. They are secured by a single screw.

Leaver clips off using a trim remover tool or tape wrapped screwdriver.

Remove the visor clips and store them safely.

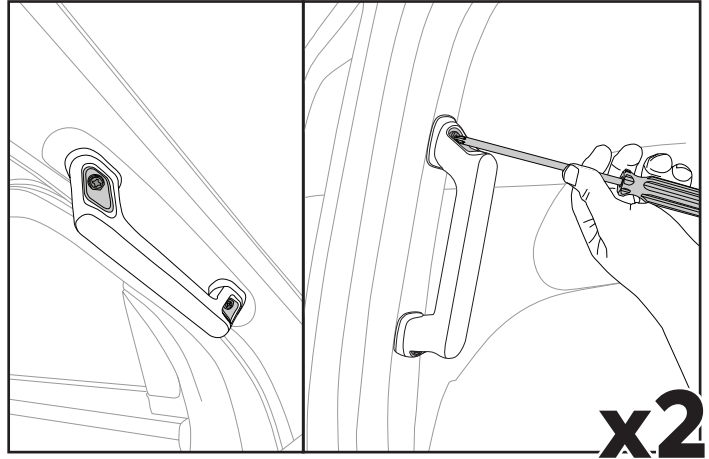


3**REMOVE ASSIST HANDLES.**

Remove both assist handle covers front and rear using a trim remover tool or tape wrapped screwdriver to reveal the bolts.

Remove all bolts using a Phillips Head screwdriver.

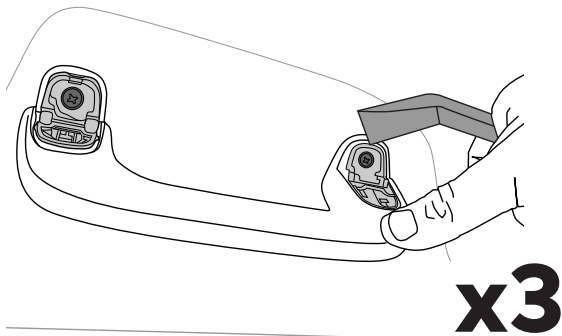
Remove the assist handles and store them safely.

**4****REMOVE GRAB HANDLES.**

Release both grab handle covers 1x front and 2x rear using a trim remover tool or tape wrapped screwdriver to reveal the bolts.

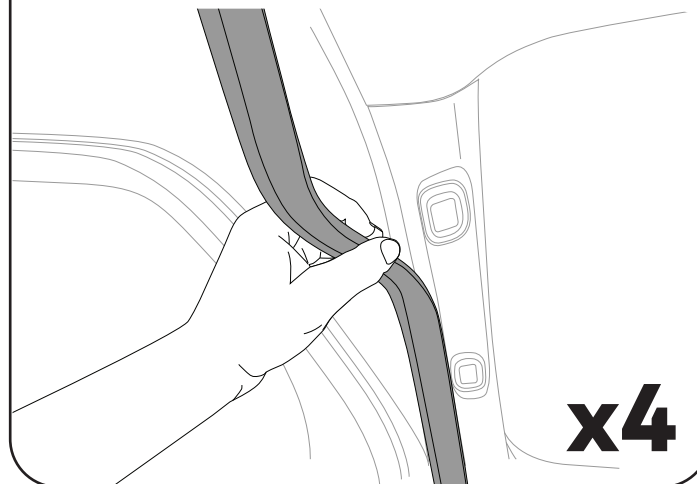
Remove all bolts using a Phillips Head screwdriver.

Remove the grab handles and store them safely.

**5****REMOVE DOOR SEALS.**

Remove all four door seals by prising away from pillars.

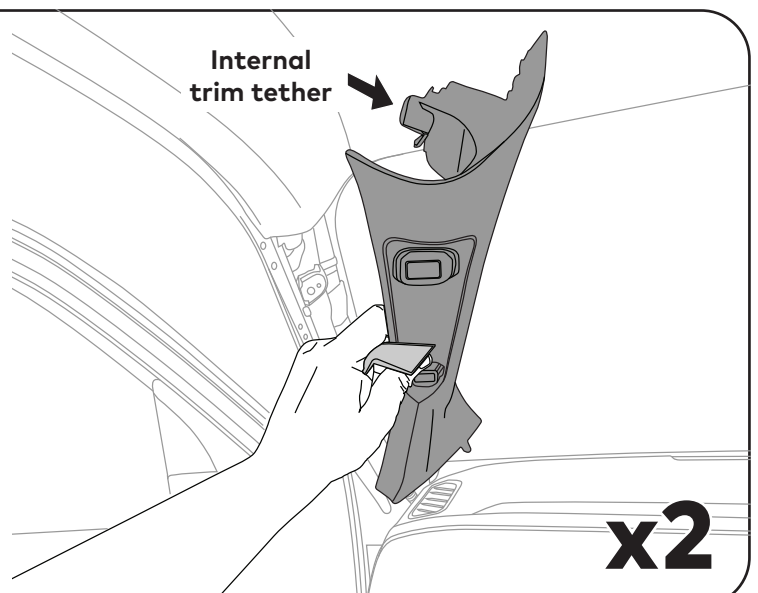
Store them safely and avoid kinking the seal.

**6****REMOVE A PILLAR COVERS.**

Loosen and remove both A pillar covers using a trim remover tool or tape wrapped screwdriver.

While the covers are loose, reach for internal trim tether still attached to vehicle and squeeze tabs either side of tether to completely remove cover.

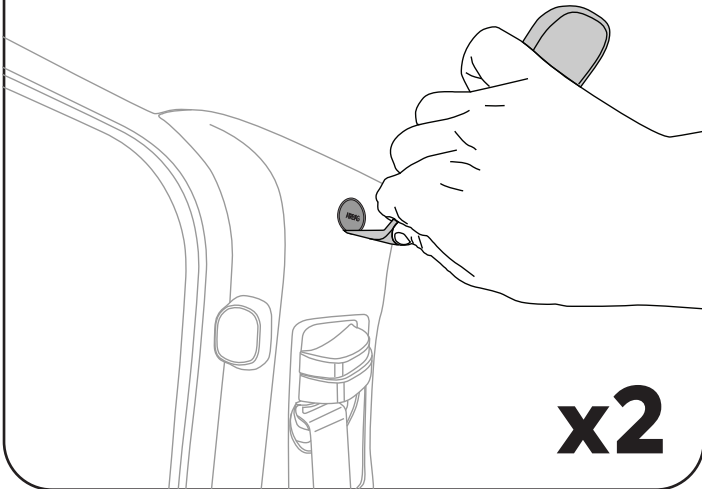
Store covers safely.



7 REMOVE B PILLAR AIR BAG BOLTS.

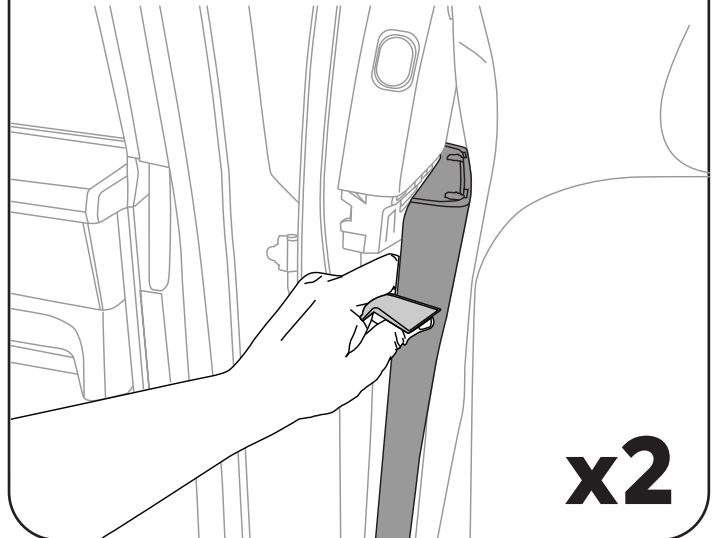
Pop open both B pillar airbag covers using a trim remover tool or tape wrapped screwdriver.

Remove both exposed bolts using a ratchet with 10 mm socket.



8 REMOVE LOWER B PILLAR COVER.

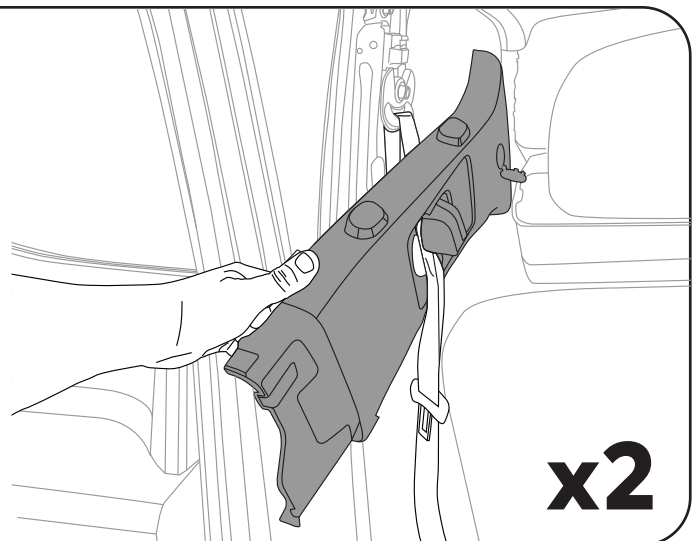
Partially remove top half of both lower B Pillar covers using a trim remover tool or tape wrapped screwdriver.



9 REMOVE UPPER B PILLAR COVERS.

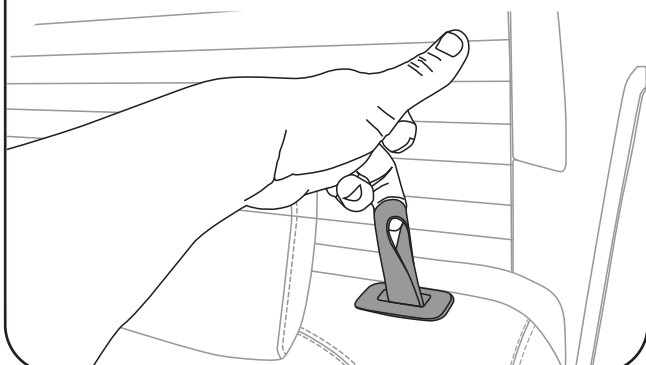
Use a trim removal tool to unclip both upper B pillar panels and let hang by the seat belt.

! **NOTE:** Take care when resting trims, if required use tape/cloth to protect from damage.



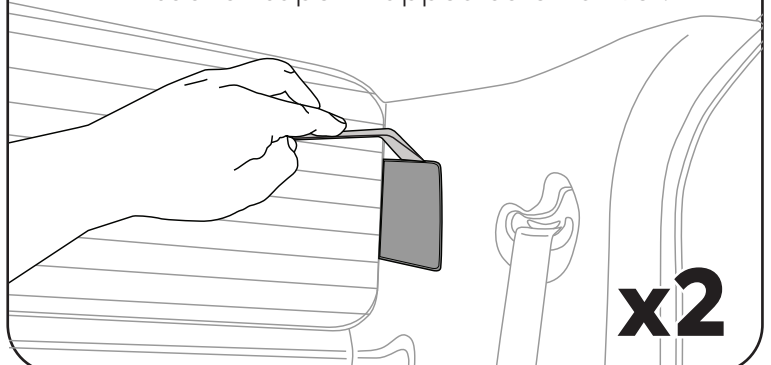
10 LOWER REAR SEATS.

Pop the rear seats down by pulling the release loops.



11 REMOVE SQUARE COVERS.

Remove both square covers next to rear seat belts using a trim remover tool or tape wrapped screwdriver.



12 REMOVE REAR WINDOW PANEL.

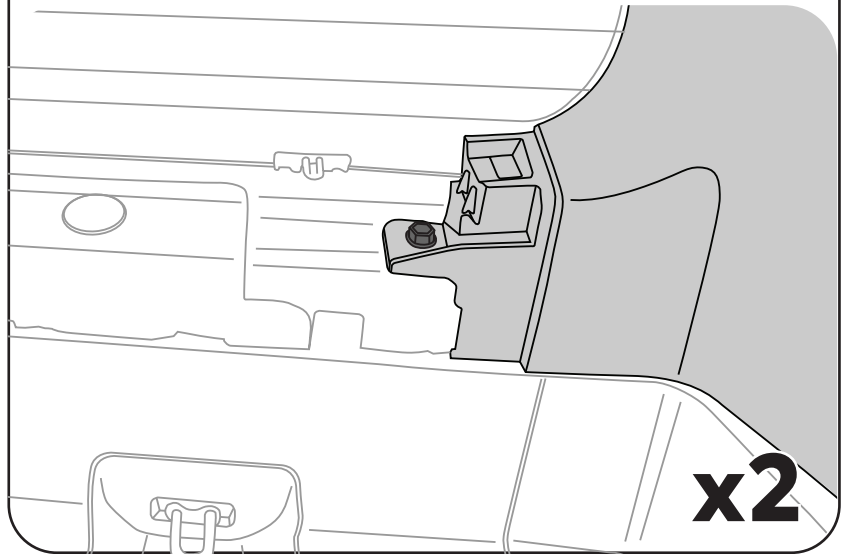
Unclip and remove the rear window panel.

This removes easily with a little force.



13 REMOVE REAR WINDOW BOLTS.

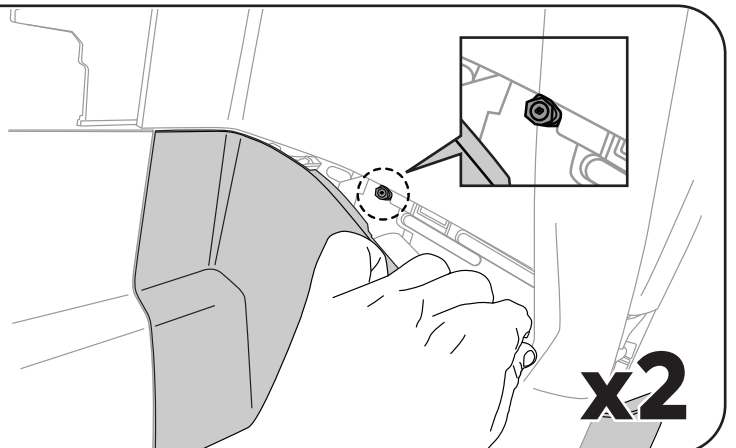
Remove exposed bolts on each side of the rear window using a 10 mm socket wrench.



14 REMOVE REAR SEAT BELT PANEL BOLTS.

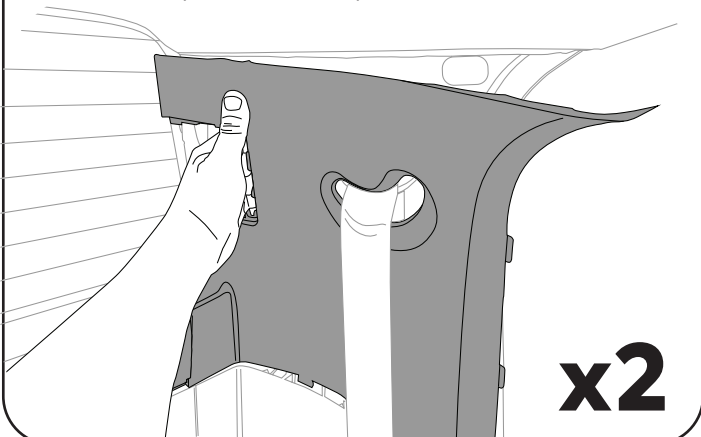
Unclip both rear lower seat belt panels using a trim remover tool or tape wrapped screwdriver.

Remove both exposed bolts using a 10 mm socket wrench.



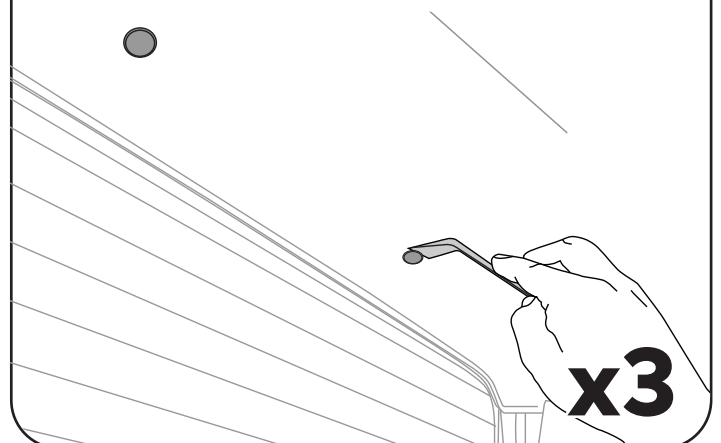
15 REMOVE UPPER SEAT BELT PANELS.

Use a trim remover tool or tape wrapped screwdriver to unclip and pull away both top seat belt panels.



16 REMOVE REAR WINDOW ROOF LINING PLUGS.

Remove all rear window roof lining plugs using a trim remover tool or tape wrapped screwdriver.



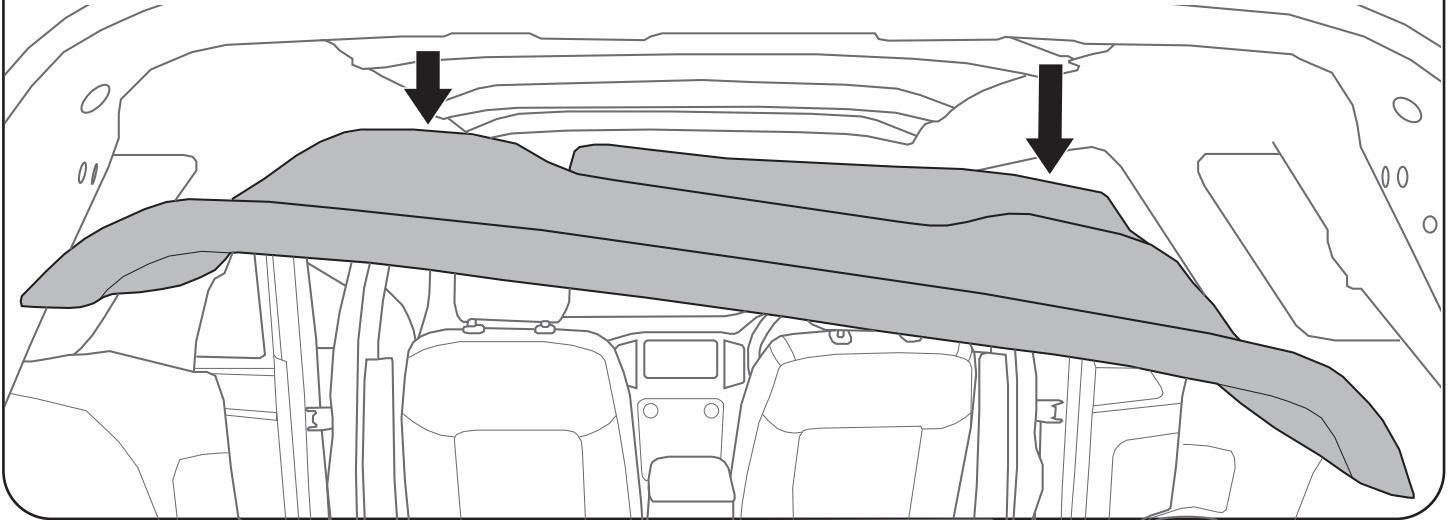
17**RELEASE ROOF LINING.**

Remove the roof lining by gently undoing the clips holding the roof lining and pulling down.

Support and protect roof lining as it drops to prevent damage, marks or creases.



NOTE: Ensure the roof lining doesn't rest on the rear seat belt panel which can cause damage or crease the roof lining.

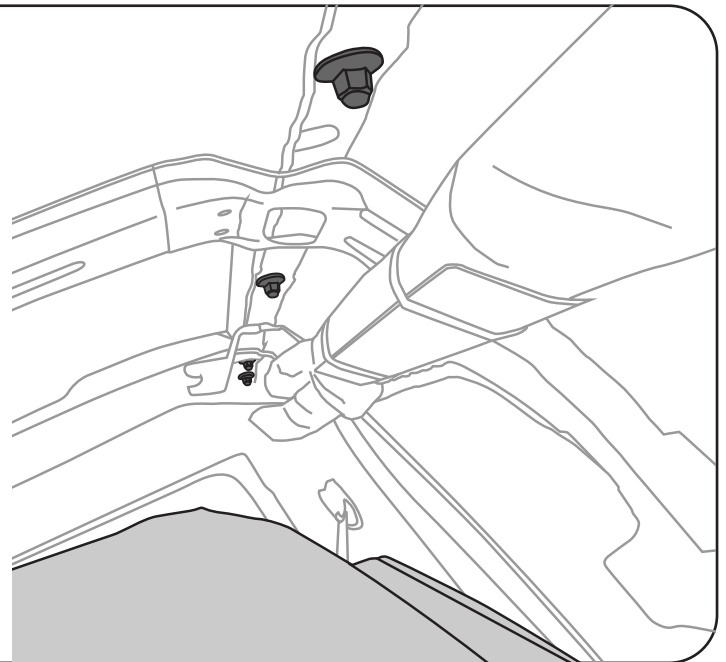
**18****REMOVE ROOF RAIL NUTS.**

Lower roof lining down gently just enough to be able to access the 6x black flange dome nuts. These nuts are holding the roof rail in place.

Remove all nuts using a 10 mm socket wrench and set aside.

Do not discard nuts as these will be used to secure the tracks.

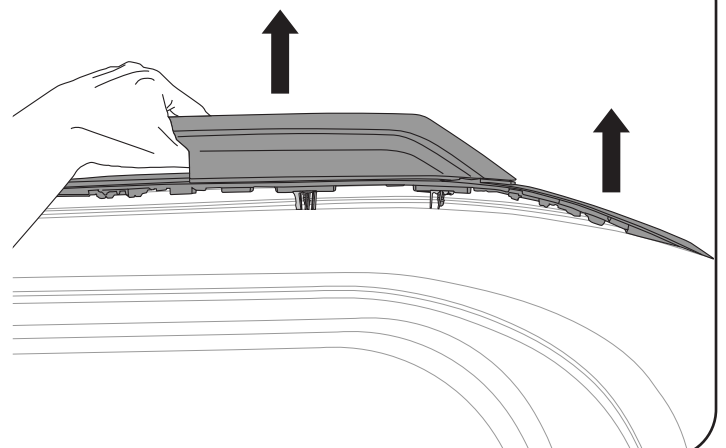
Repeat on other side.

**19****REMOVE ROOF RAIL.**

Carefully lift roof rail and trim up out of the channel.

Wipe the channel clean of adhesive residue and dust using alcohol wipes or soapy water to ensure a clear surface for the foam adhesive.

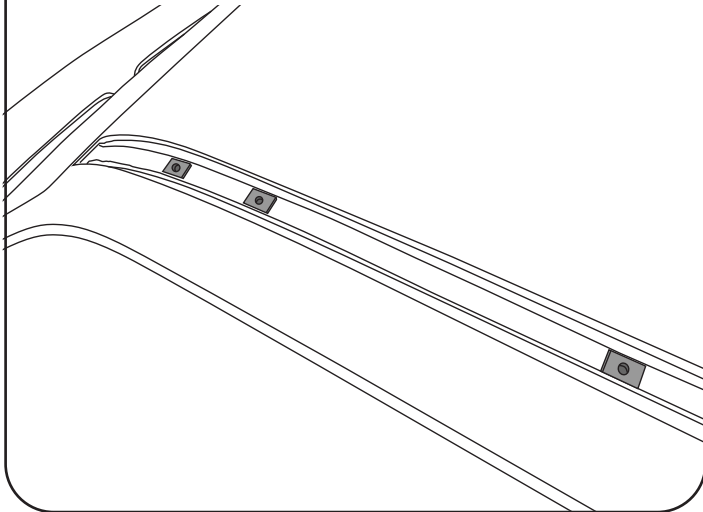
Repeat on other side.



20 APPLY FOAM ADHESIVE.

Peel tape and stick the supplied foam adhesive patches over each of the 6 exposed thread holes on roof channel.

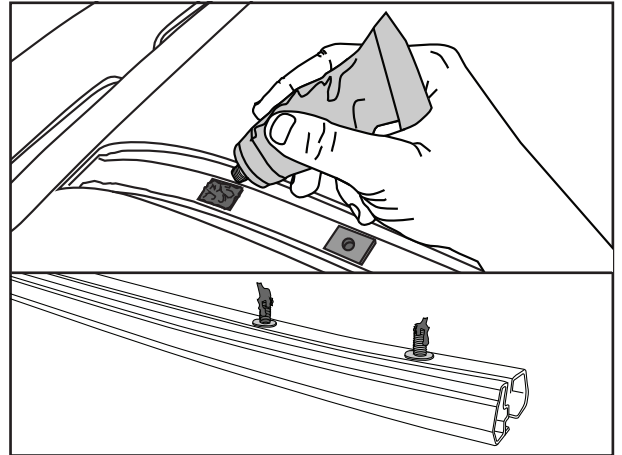
Repeat on other side.



21 APPLY SILICONE SEALANT.

Liberal apply the supplied silicone sealant to all patches and in the roof holes.

Liberal apply the supplied silicone sealant to all the track threads.

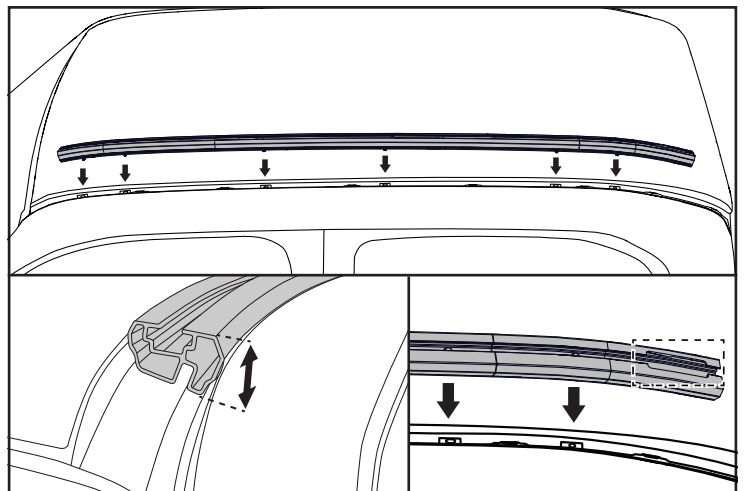


22 PLACE TRACK INTO ROOF CHANNEL.

Place track into roof channel, guiding the track threads into the holes in roof channel.

The tallest side of track is to be facing outboard of the vehicle and the nut plate insert at the rear of the vehicle.

Repeat on other side.

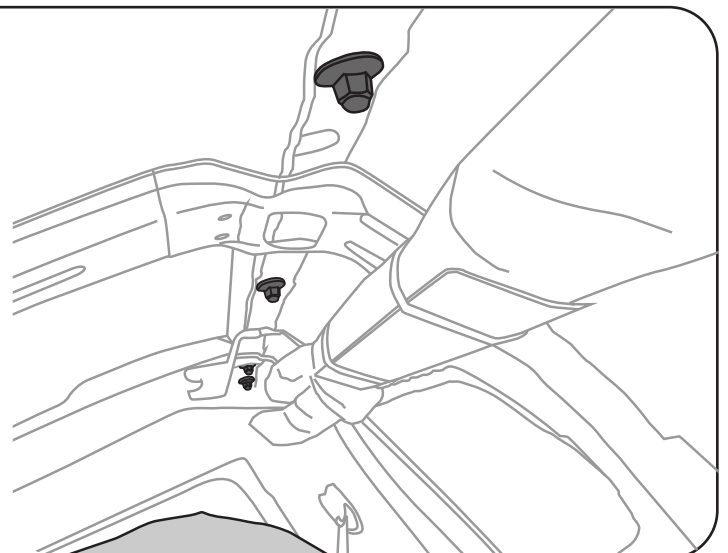


23 HAND TIGHTEN TRACK.

Loosely secure the track into roof channel using the 6x black flange dome nuts that were removed in Step 18.

Hand tighten nuts from inside the vehicle.

Repeat on other side.

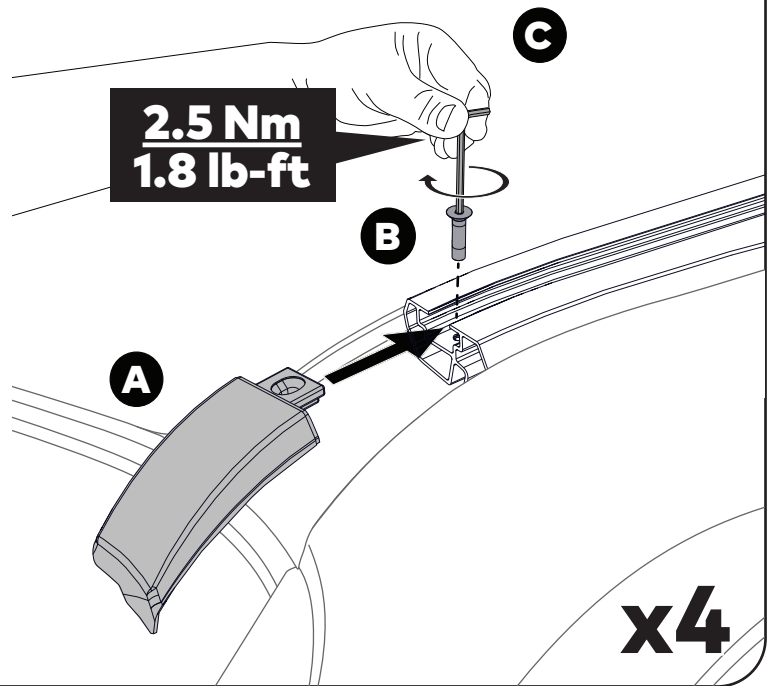


24 INSTALL END CAPS.

Check underside of end caps for correct orientation and slide into the ends of tracks.

The front end cap ends fit under the windscreen rubber.

Secure each end cap using 1x M5 countersunk hex screw and tighten to 2.5 Nm using the supplied 3 mm allen key.

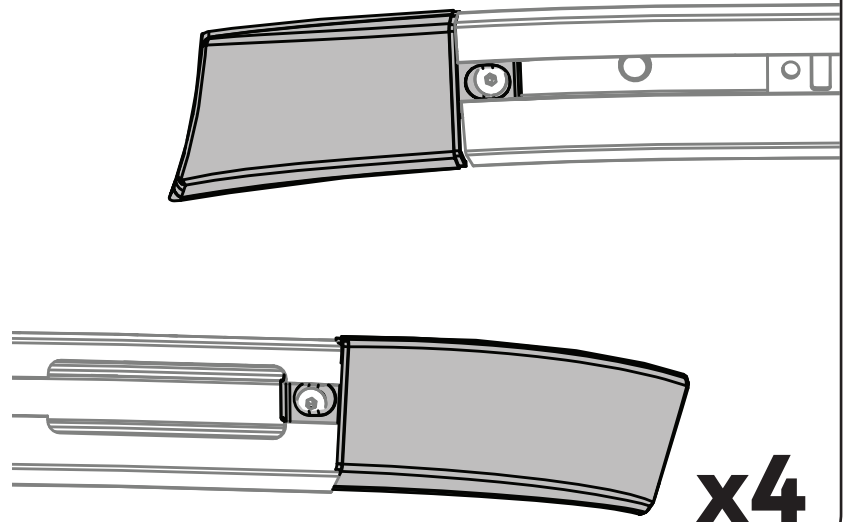


25 CHECK END CAP ALIGNMENT.

Ensure end caps align flush with the ends of the track.

If end caps do not align, gently shift the tracks to make the end caps align.

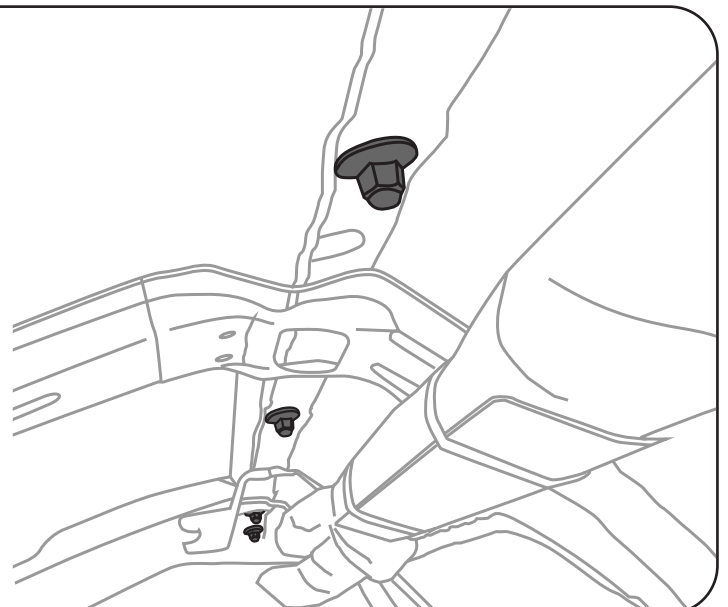
Repeat for other side.



26 FULLY SECURE TRACKS.

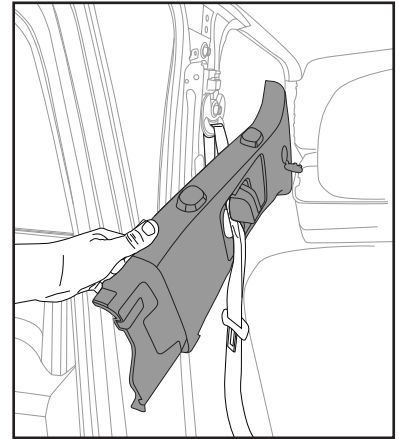
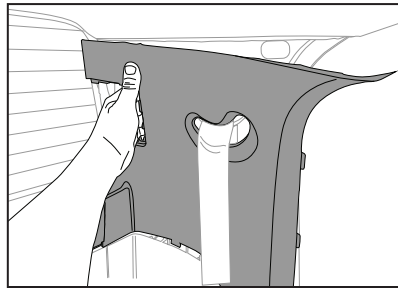
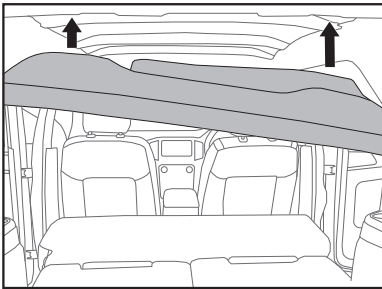
Ensure the alignment of the track and end caps, then fully secure the track into roof channel by tightening nuts from inside the vehicle to 5 Nm using a 10 mm socket wrench.

Repeat for other side.



27**RE-INSTALL ALL TRIMS.**

Re-install all the trims removed inside the cabin in reverse order from step 17-1.



IF INSTALLING A LOCKNLOAD PLATFORM, SWITCH TO YOUR RUGGEDLINE HD (8005204) INSTRUCTIONS.

IF INSTALLING LOCKNLOAD OR STREAMLINE ROOF RACKS, SWITCH TO YOUR LEG/TOWER INSTRUCTIONS.

YAKIMA®

www.yakima.com.au

www.yakima.co.nz

www.yakima.com

www.yakima.eu

YAKIMA AUSTRALIA PTY LTD

17 Hinkler Court
Brendale, QLD 4500
Australia
1800 143 548

YAKIMA PRODUCTS, INC.

4101 Kruse Way
Lake Oswego, OR
97035-2541
USA
888 925 4621
yakima.com/support

ALL CONTENT SUBJECT TO YAKIMA AUSTRALIA PTY LTD COPYRIGHT © 2026