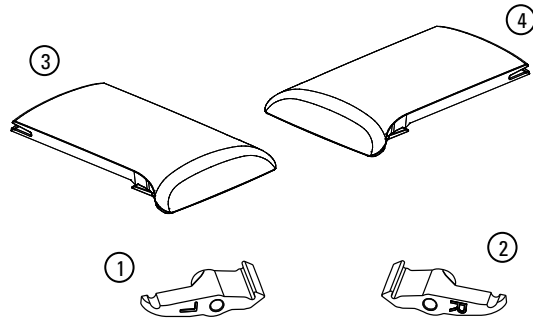


KIT CONTENTS

Item	Component	QTY
1	Toggle LHS	2
2	Toggle RHS	2
3	Leg Cover LHS	2
4	Leg Cover RHS	2



TOOLS REQUIRED

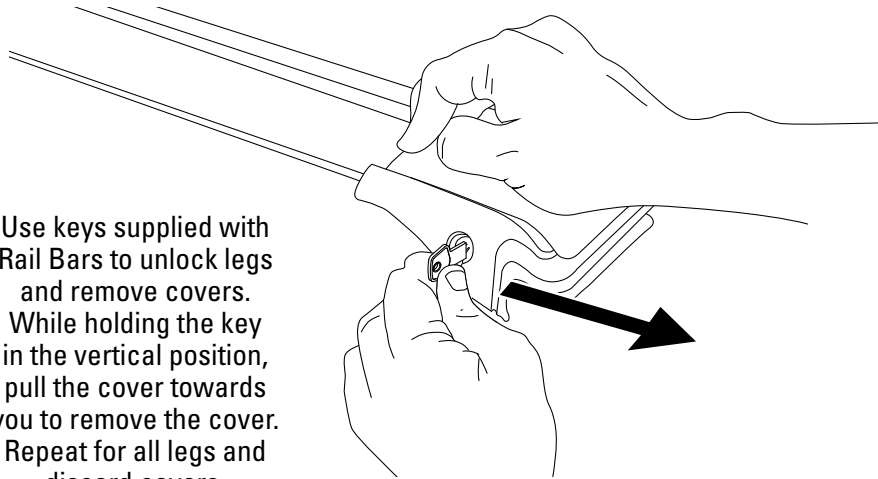
- 5mm hex wrench (or supplied hex wrench included inside leg)
- Long Nose Pliers
- Pointed Metal Pick or similar

FIRST TIME INSTALLATION

- Please read instructions carefully before installation.
- Check the contents of kit. If any parts appear missing or damaged contact us through customer care@whispbar.com.

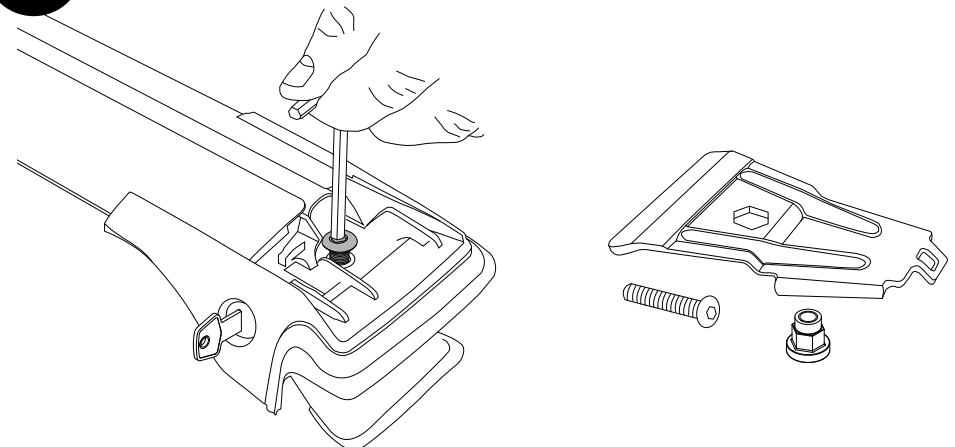
1 REMOVE COVERS

Use keys supplied with Rail Bars to unlock legs and remove covers. While holding the key in the vertical position, pull the cover towards you to remove the cover. Repeat for all legs and discard covers.



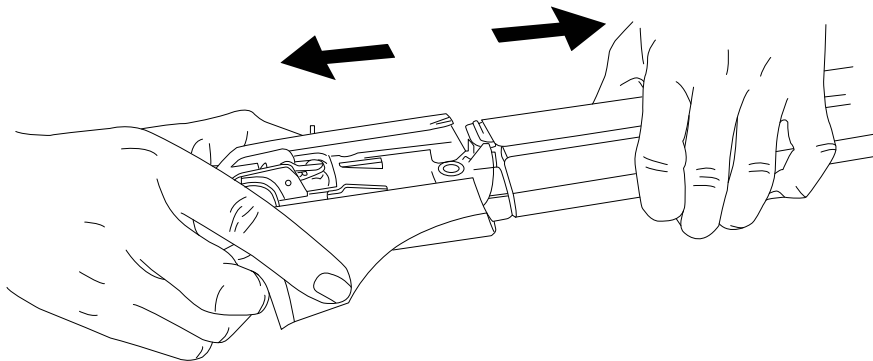
2 REMOVE LEG BOLT AND CLAMP

Using 5mm hex wrench, unscrew bolt completely and separate from the nut underneath. Remove the bolt, clamp and nut. Store these three items aside for Step 8.



3 SEPARATE LEG FROM BAR

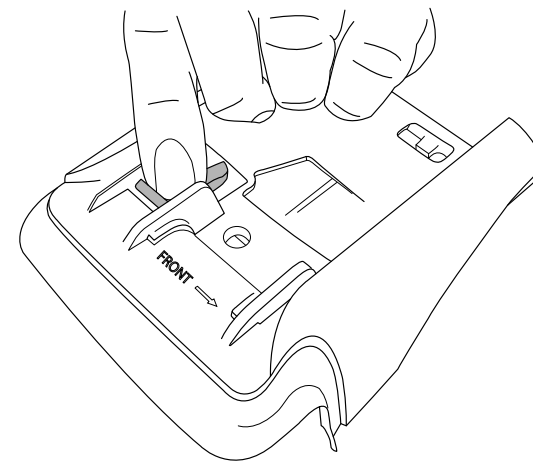
Separate the leg by pulling the leg assembly away from the aluminium bar.



4 REMOVE PIN AND TOGGLE

NOTE - Read steps 4 - 4b before commencing.

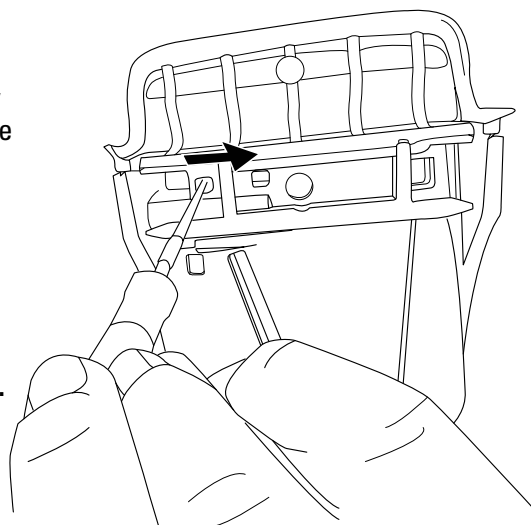
Place and HOLD finger on toggle. With finger held firmly on toggle turn leg over



4 a

Insert a metal pick into cavity on underside of the leg and use pick to push the pin across. Keep finger held on toggle.

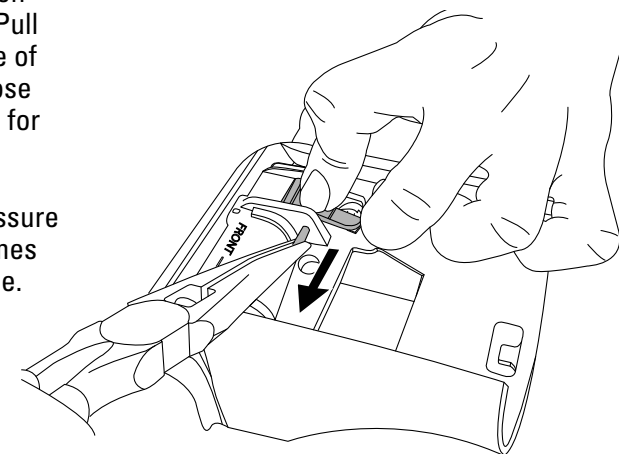
CAUTION - Toggle is under spring tension; as pin is removed it will want to move.



4 b

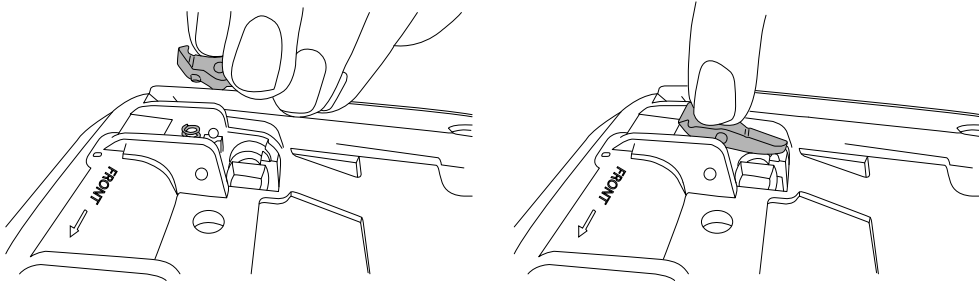
With finger still held on toggle, turn leg over. Pull pin out from other side of housing using long nose pliers. Store pin aside for use in step 6.

Gradually release pressure off toggle until it comes free. Discard toggle.



5 INSERT NEW TOGGLE

Using a new toggle from the replacement kit, position new toggle by locating the knob into the top of the spring inside leg. Push toggle down into spring and hold firmly with finger.

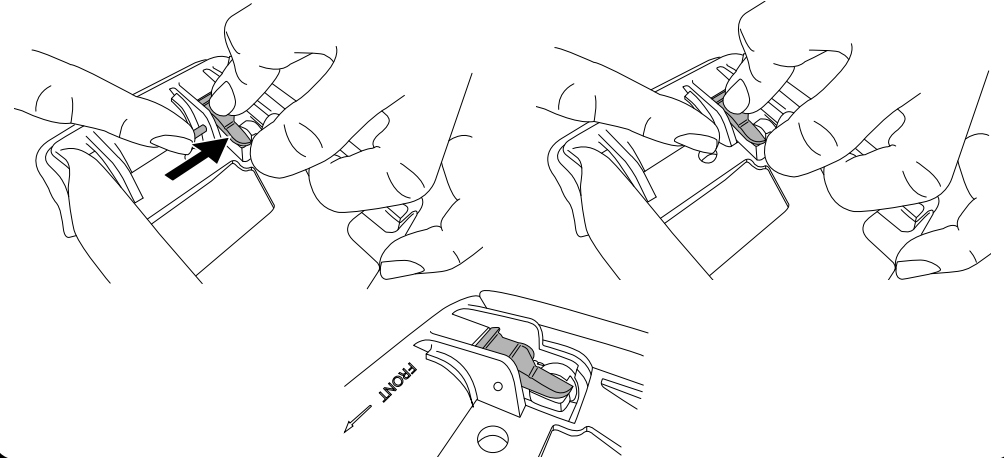


NOTE - new toggle can be identified by scalloped feature as shown.



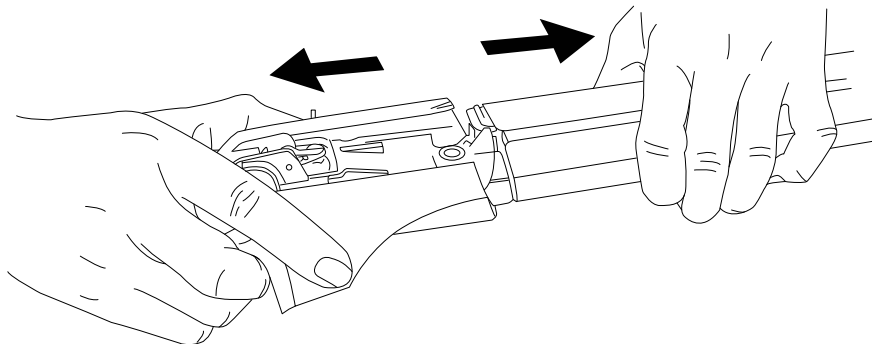
6 RE-INSERT PIN

With toggle held down, insert pin through hole inside of spring housing. Keep pushing in until the pin passes through the hole in the toggle and into the other side of the leg. Once pin is fully inserted and secure, release finger off toggle.



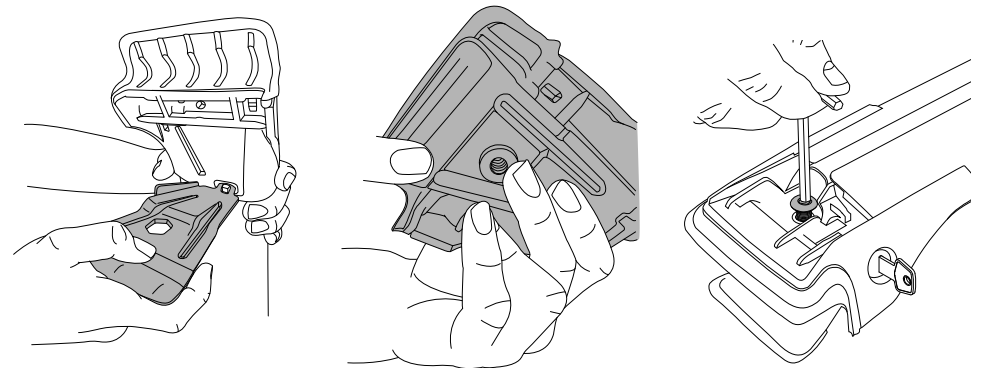
7 RE-INSERT LEG INTO BAR

Re-insert the leg by pushing the leg assembly into the aluminium bar.



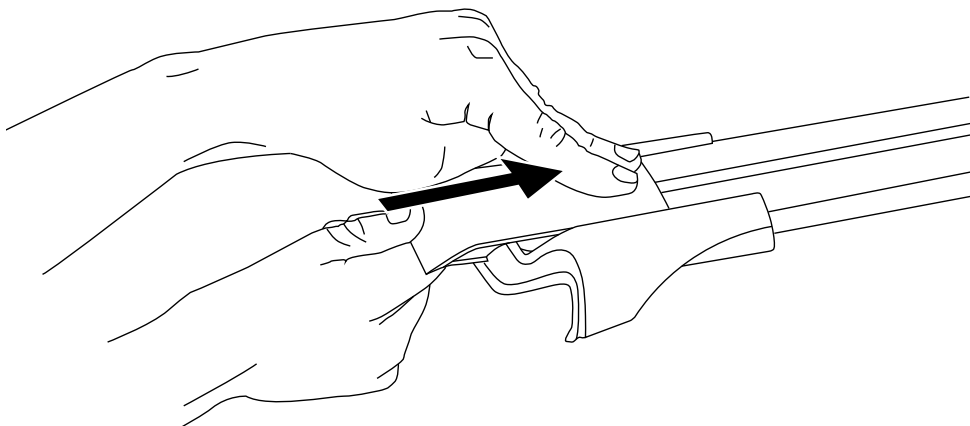
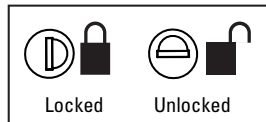
8 RE-ATTACH LEG BOLT AND CLAMP

Re-attach clamp to underside of leg, place nut into hexagonal recess on clamp plate. Holding these two items in place, feed bolt through from top side of leg. Use a 5mm hex wrench to fasten these items together.



9**REPLACE COVERS**

Ensure the locks on the legs are in the locked position (horizontal). Using new covers from the replacement kit, slide cover into the leg, you will hear a 'click' when the cover is securely locked. Repeat for all legs.

**MAINTENANCE**

- Check roof rack is securely attached whenever you refit it to the vehicle. If the unit feels loose, refer to the fitting instructions and readjust.
- Regularly check all fasteners. This includes all attached accessories and roof racks.
- If contaminated with oil, fuel or acid remove with hot soapy water.

CAUTION

- Do not exceed the vehicle manufacturer's roof load rating. Total load equals weight of roof racks + accessories + cargo/equipment.
- Ensure that all loads are distributed evenly across the roof racks and are secured.
- A loaded roof rack system can alter the performance of your vehicle. Be especially aware of the effects of side winds, changing of direction, and braking performance. Avoid rapid acceleration and deceleration. Drive Carefully.
- Make sure all loads are securely fastened with non-elastic straps. Check regularly during longer journeys.
- Never drive into a car wash with the roof rack system fitted.

YAKIMA

www.yakima.com

YAKIMA PRODUCTS, INC.

4101 KRUSE WAY, LAKE OSWEGO, OR
97035-2541 USA - 888.925.4621
yakima.com/support

YAKIMA EUROPE COOPERATIEF UA

Twentehaven 7, Nieuwegein 3433, The Netherlands

YAKIMA AUSTRALIA PTY. LTD

17 Hinkler Court, Brendale, QLD 4500 - Tel: 1800 143 548